

## PLSCR1 Antibody (monoclonal) (M01)

Mouse monoclonal antibody raised against a full length recombinant PLSCR1.

Catalog # AT3348a

### Product Information

---

<b>Application</b>	E
<b>Primary Accession</b>	<a href="#">O15162</a>
<b>Other Accession</b>	<a href="#">BC032718</a>
<b>Reactivity</b>	Human
<b>Host</b>	mouse
<b>Clonality</b>	monoclonal
<b>Isotype</b>	IgG2a Kappa
<b>Clone Names</b>	1F9
<b>Calculated MW</b>	35049

### Additional Information

---

<b>Gene ID</b>	5359
<b>Other Names</b>	Phospholipid scramblase 1, PL scramblase 1, Ca(2+)-dependent phospholipid scramblase 1, Erythrocyte phospholipid scramblase, MmTRA1b, PLSCR1
<b>Target/Specificity</b>	PLSCR1 (AAH32718, 1 a.a. ~ 318 a.a) full-length recombinant protein with GST tag. MW of the GST tag alone is 26 KDa.
<b>Dilution</b>	E~~N/A
<b>Format</b>	Clear, colorless solution in phosphate buffered saline, pH 7.2 .
<b>Storage</b>	Store at -20°C or lower. Aliquot to avoid repeated freezing and thawing.
<b>Precautions</b>	PLSCR1 Antibody (monoclonal) (M01) is for research use only and not for use in diagnostic or therapeutic procedures.

### References

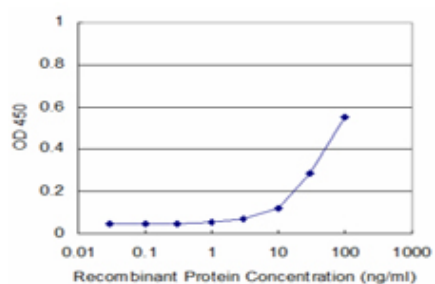
---

Calcium binding studies of peptides of human phospholipid scramblases 1 to 4 suggest that scramblases are new class of calcium binding proteins in the cell. Sahu SK, et al. Biochim Biophys Acta, 2009 Oct. PMID 19540310. The phospholipid scramblases 1 and 4 are cellular receptors for the secretory leukocyte protease inhibitor and interact with CD4 at the plasma membrane. Py B, et al. PLoS One, 2009. PMID 19333378. Phospholipid scramblase 1 modulates a selected set of IgE receptor-mediated mast cell responses through LAT-dependent pathway. Amir-Moazami O, et al. J Biol Chem, 2008 Sep 12. PMID 18579528. Proteinase 3, the Wegener autoantigen, is externalized during neutrophil apoptosis: evidence for a functional association with phospholipid scramblase 1 and interference with macrophage phagocytosis. Kantari C, et al. Blood, 2007 Dec 1. PMID 17712045. A protein-protein interaction network for human

inherited ataxias and disorders of Purkinje cell degeneration. Lim J, et al. Cell, 2006 May 19. PMID 16713569.

## Images

---



Detection limit for recombinant GST tagged PLSCR1 is approximately 3ng/ml as a capture antibody.

Please note: All products are 'FOR RESEARCH USE ONLY. NOT FOR USE IN DIAGNOSTIC OR THERAPEUTIC PROCEDURES'.