

PDHB Antibody (monoclonal) (M03)

Mouse monoclonal antibody raised against a partial recombinant PDHB.

Catalog # AT3259a

Product Information

Application	WB, IHC, E
Primary Accession	P11177
Other Accession	NM_000925
Reactivity	Human
Host	mouse
Clonality	monoclonal
Isotype	IgG1 Kappa
Clone Names	2B2
Calculated MW	39233

Additional Information

Gene ID	5162
Other Names	Pyruvate dehydrogenase E1 component subunit beta, mitochondrial, PDHE1-B, PDHB, PHE1B
Target/Specificity	PDHB (NP_000916, 250 a.a. ~ 359 a.a) partial recombinant protein with GST tag. MW of the GST tag alone is 26 KDa.
Dilution	WB~~1:500~1000 IHC~~1:100~500 E~~N/A
Format	Clear, colorless solution in phosphate buffered saline, pH 7.2 .
Storage	Store at -20°C or lower. Aliquot to avoid repeated freezing and thawing.
Precautions	PDHB Antibody (monoclonal) (M03) is for research use only and not for use in diagnostic or therapeutic procedures.

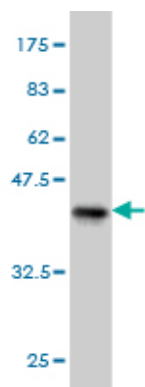
Background

The pyruvate dehydrogenase (PDH) complex is a nuclear-encoded mitochondrial multienzyme complex that catalyzes the overall conversion of pyruvate to acetyl-CoA and CO₂, and provides the primary link between glycolysis and the tricarboxylic acid (TCA) cycle. The PDH complex is composed of multiple copies of three enzymatic components: pyruvate dehydrogenase (E1), dihydrolipoamide acetyltransferase (E2) and lipoamide dehydrogenase (E3). The E1 enzyme is a heterotetramer of two alpha and two beta subunits. This gene encodes the E1 beta subunit. Mutations in this gene are associated with pyruvate dehydrogenase E1-beta deficiency. Alternatively spliced transcript variants have been found for this gene.

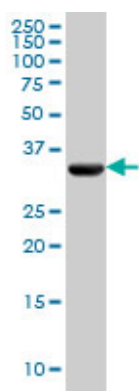
References

1. Proteomics of uveal melanomas suggests HSP-27 as a possible surrogate marker of chromosome 3 loss. Coupland SE, Vorum H, Mandal N, Kalirai H, Honore B, Urbak SF, Lake SL, Dopierala J, Damato B. Invest Ophthalmol Vis Sci. 2010 Jan;51(1):12-20. Epub 2009 Jul 30.

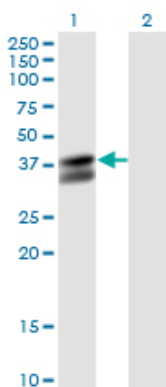
Images



Antibody Reactive Against Recombinant Protein. Western Blot detection against Immunogen (37.84 KDa) .

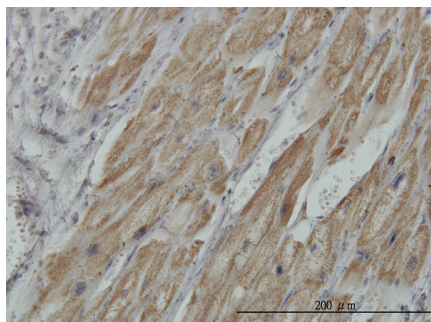


PDHB monoclonal antibody (M03), clone 2B2 Western Blot analysis of PDHB expression in HeLa (Cat # AT3259a)



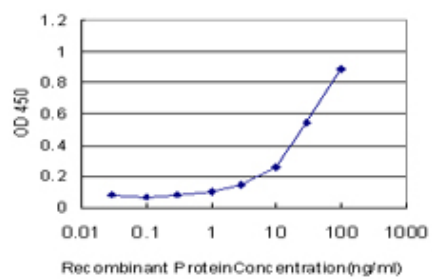
Western Blot analysis of PDHB expression in transfected 293T cell line by PDHB monoclonal antibody (M03), clone 2B2.

Lane 1: PDHB transfected lysate(39.2 KDa).
Lane 2: Non-transfected lysate.



Immunoperoxidase of monoclonal antibody to PDHB on formalin-fixed paraffin-embedded human heart.
[antibody concentration 3 ug/ml]

Detection limit for recombinant GST tagged PDHB is approximately 1ng/ml as a capture antibody.



Please note: All products are 'FOR RESEARCH USE ONLY. NOT FOR USE IN DIAGNOSTIC OR THERAPEUTIC PROCEDURES'.