

PCK1 Antibody (monoclonal) (M01)

Mouse monoclonal antibody raised against a full length recombinant PCK1.

Catalog # AT3233a

Product Information

Application	WB, IF, IP
Primary Accession	P35558
Other Accession	BC023978
Reactivity	Human
Host	mouse
Clonality	monoclonal
Isotype	IgG1 Kappa
Clone Names	3E5
Calculated MW	69195

Additional Information

Gene ID	5105
Other Names	Phosphoenolpyruvate carboxykinase, cytosolic [GTP], PEPCK-C, PCK1, PEPCK1
Target/Specificity	PCK1 (AAH23978, 1 a.a. ~ 622 a.a) full-length recombinant protein with GST tag. MW of the GST tag alone is 26 KDa.
Dilution	WB~~1:500~1000 IF~~1:50~200 IP~~N/A
Format	Clear, colorless solution in phosphate buffered saline, pH 7.2 .
Storage	Store at -20°C or lower. Aliquot to avoid repeated freezing and thawing.
Precautions	PCK1 Antibody (monoclonal) (M01) is for research use only and not for use in diagnostic or therapeutic procedures.

Background

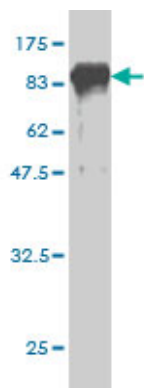
This gene is a main control point for the regulation of gluconeogenesis. The cytosolic enzyme encoded by this gene, along with GTP, catalyzes the formation of phosphoenolpyruvate from oxaloacetate, with the release of carbon dioxide and GDP. The expression of this gene can be regulated by insulin, glucocorticoids, glucagon, cAMP, and diet. Defects in this gene are a cause of cytosolic phosphoenolpyruvate carboxykinase deficiency. A mitochondrial isozyme of the encoded protein also has been characterized.

References

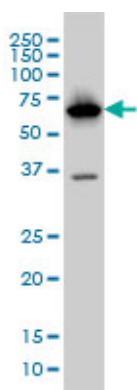
COMMON VARIANTS IN 40 GENES ASSESSED FOR DIABETES INCIDENCE AND RESPONSE TO METFORMIN AND LIFESTYLE INTERVENTIONS IN THE DIABETES PREVENTION PROGRAM. Jablonski KA, et al. Diabetes,

2010 Aug 3. PMID 20682687.Variation at the NFATC2 Locus Increases the Risk of Thiazolinedinedione-Induced Edema in the Diabetes REduction Assessment with ramipril and rosiglitazone Medication (DREAM) Study. Bailey SD, et al. Diabetes Care, 2010 Jul 13. PMID 20628086.Physiogenomic analysis of statin-treated patients: domain-specific counter effects within the ACACB gene on low-density lipoprotein cholesterol? Ruafo G, et al. Pharmacogenomics, 2010 Jul. PMID 20602615.Intermediate phenotypes identify divergent pathways to Alzheimer's disease. Shulman JM, et al. PLoS One, 2010 Jun 21. PMID 20574532.Gene-centric association signals for lipids and apolipoproteins identified via the HumanCVD BeadChip. Talmud PJ, et al. Am J Hum Genet, 2009 Nov. PMID 19913121.

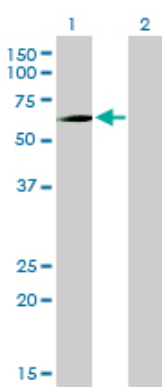
Images



Antibody Reactive Against Recombinant Protein.Western Blot detection against Immunogen (94.16 KDa) .

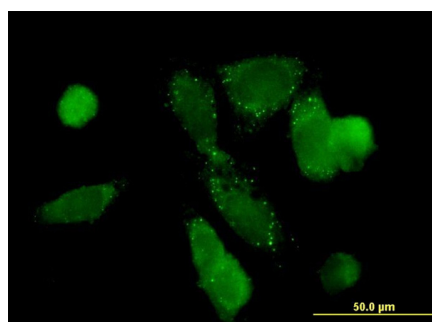


PCK1 monoclonal antibody (M01), clone 3E4 Western Blot analysis of PCK1 expression in HepG2 ((Cat # AT3233a)

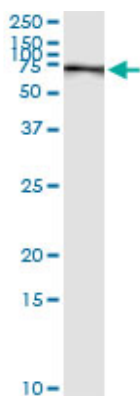


Western Blot analysis of PCK1 expression in transfected 293T cell line by PCK1 monoclonal antibody (M01), clone 3E4.

Lane 1: PCK1 transfected lysate(69.2 KDa).
Lane 2: Non-transfected lysate.



Immunofluorescence of monoclonal antibody to PCK1 on HepG2 cell. [antibody concentration 10 ug/ml]



Immunoprecipitation of PCK1 transfected lysate using anti-PCK1 monoclonal antibody and Protein A Magnetic Bead ([U0007](#)), and immunoblotted with PCK1 MaxPab rabbit polyclonal antibody.

Please note: All products are 'FOR RESEARCH USE ONLY. NOT FOR USE IN DIAGNOSTIC OR THERAPEUTIC PROCEDURES'.