

PCDH1 Antibody (monoclonal) (M01)

Mouse monoclonal antibody raised against a partial recombinant PCDH1.
Catalog # AT3210a

Product Information

Application	WB, IHC, IF, E
Primary Accession	Q08174
Other Accession	NM_002587
Reactivity	Human
Host	mouse
Clonality	monoclonal
Isotype	IgG1 Kappa
Clone Names	5D5
Calculated MW	114743

Additional Information

Gene ID	5097
Other Names	Protocadherin-1, Cadherin-like protein 1, Protocadherin-42, PC42, PCDH1
Target/Specificity	PCDH1 (NP_002578, 62 a.a. ~ 169 a.a) partial recombinant protein with GST tag. MW of the GST tag alone is 26 KDa.
Dilution	WB~~1:500~1000 IHC~~1:100~500 IF~~1:50~200 E~~N/A
Format	Clear, colorless solution in phosphate buffered saline, pH 7.2 .
Storage	Store at -20°C or lower. Aliquot to avoid repeated freezing and thawing.
Precautions	PCDH1 Antibody (monoclonal) (M01) is for research use only and not for use in diagnostic or therapeutic procedures.

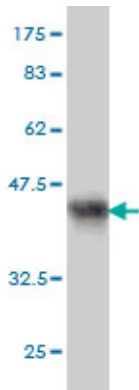
Background

This gene belongs to the protocadherin subfamily within the cadherin superfamily. The encoded protein is a membrane protein found at cell-cell boundaries. It is involved in neural cell adhesion, suggesting a possible role in neuronal development. The protein includes an extracellular region, containing 7 cadherin-like domains, a transmembrane region and a C-terminal cytoplasmic region. Cells expressing the protein showed cell aggregation activity. Alternative splicing occurs in this gene.

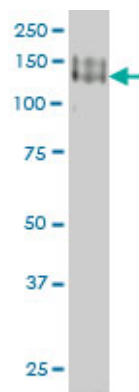
References

1. Identification of PCDH1 as a Novel Susceptibility Gene for Bronchial Hyperresponsiveness. Koppelman GH, Meyers DA, Howard TD, Zheng SL, Hawkins GA, Ampleford EJ, Xu J, Koning H, Bruinenberg M, Nolte IM, van

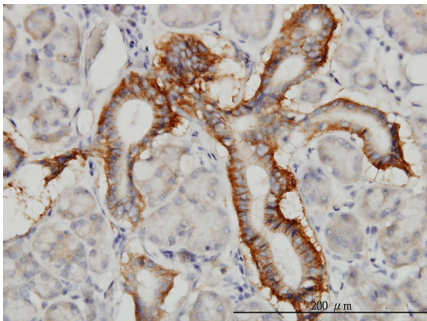
Images



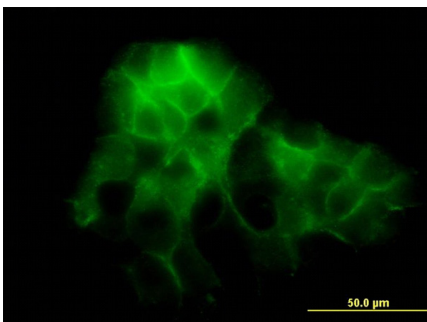
Antibody Reactive Against Recombinant Protein. Western Blot detection against Immunogen (37.62 KDa) .



PCDH1 monoclonal antibody (M01), clone 5D5 Western Blot analysis of PCDH1 expression in A-431 ((Cat # AT3210a)

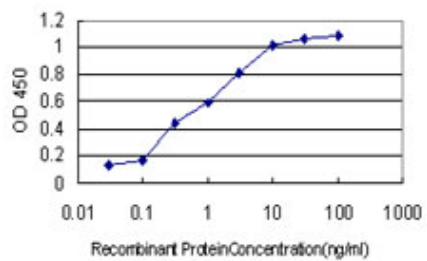


Immunoperoxidase of monoclonal antibody to PCDH1 on formalin-fixed paraffin-embedded human salivary gland. [antibody concentration 3 ug/ml]



Immunofluorescence of monoclonal antibody to PCDH1 on A-431 cell. [antibody concentration 10 ug/ml]

Detection limit for recombinant GST tagged PCDH1 is approximately 0.03ng/ml as a capture antibody.



Please note: All products are 'FOR RESEARCH USE ONLY. NOT FOR USE IN DIAGNOSTIC OR THERAPEUTIC PROCEDURES'.