

ORM1 Antibody (monoclonal) (M01)

Mouse monoclonal antibody raised against a full length recombinant ORM1.

Catalog # AT3156a

Product Information

Application	WB, IHC, IP, E
Primary Accession	P02763
Other Accession	BC026238
Reactivity	Human
Host	Mouse
Clonality	monoclonal
Isotype	IgG1 kappa
Clone Names	2F9-1F10
Calculated MW	23540

Additional Information

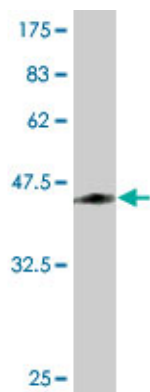
Gene ID	5004
Other Names	Alpha-1-acid glycoprotein 1, AGP 1, Orosomucoid-1, OMD 1, ORM1, AGP1
Target/Specificity	ORM1 (AAH26238, 18 a.a. ~ 201 a.a) full-length recombinant protein with GST tag. MW of the GST tag alone is 26 KDa.
Dilution	WB~~1:500~1000 IHC~~1:100~500 IP~~N/A E~~N/A
Format	Clear, colorless solution in phosphate buffered saline, pH 7.2 .
Storage	Store at -20°C or lower. Aliquot to avoid repeated freezing and thawing.
Precautions	ORM1 Antibody (monoclonal) (M01) is for research use only and not for use in diagnostic or therapeutic procedures.

Background

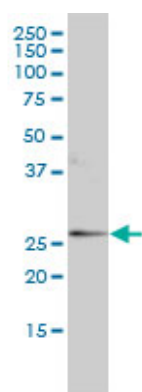
This gene encodes a key acute phase plasma protein. Because of its increase due to acute inflammation, this protein is classified as an acute-phase reactant. The specific function of this protein has not yet been determined; however, it may be involved in aspects of immunosuppression.

References

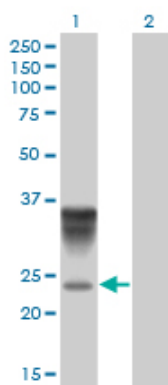
1.A serum protein profile predictive of the resistance to neoadjuvant chemotherapy in advanced breast cancers.Hyung SW, Lee MY, Yu JH, Shin B, Jung HJ, Park JM, Han W, Lee KM, Moon HG, Zhang H, Aebersold R, Hwang D, Lee SW, Yu MH, Noh DY.Mol Cell Proteomics. 2011 Jul 28. [Epub ahead of print]



Antibody Reactive Against Recombinant Protein. Western Blot detection against Immunogen (45.98 KDa) .

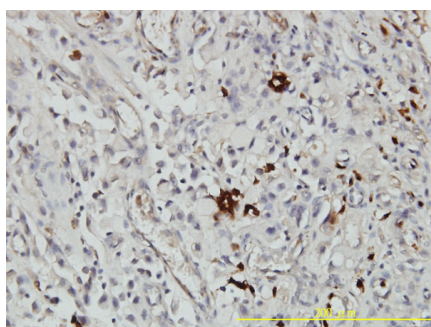


ORM1 monoclonal antibody (M01), clone 2F9-1F10
Western Blot analysis of ORM1 expression in MCF-7 ((Cat # AT3156a)



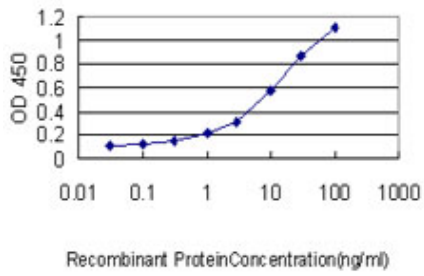
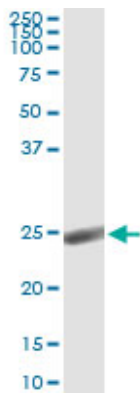
Western Blot analysis of ORM1 expression in transfected 293T cell line by ORM1 monoclonal antibody (M01), clone 2F9-1F10.

Lane 1: ORM1 transfected lysate(23.5 KDa).
Lane 2: Non-transfected lysate.

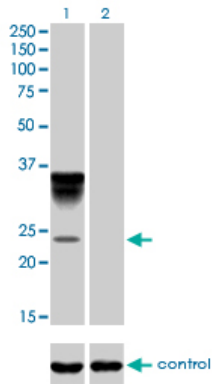


Immunoperoxidase of monoclonal antibody to ORM1 on formalin-fixed paraffin-embedded human stomach carcinoma tissue. [antibody concentration 1 ug/ml]

Immunoprecipitation of ORM1 transfected lysate using anti-ORM1 monoclonal antibody and Protein A Magnetic Bead ([U0007](#)), and immunoblotted with ORM1 MaxPab rabbit polyclonal antibody.



Detection limit for recombinant GST tagged ORM1 is approximately 0.1 ng/ml as a capture antibody.



Western blot analysis of ORM1 over-expressed 293 cell line, cotransfected with ORM1 Validated Chimera RNAi (Cat # AT3156a)

Please note: All products are 'FOR RESEARCH USE ONLY. NOT FOR USE IN DIAGNOSTIC OR THERAPEUTIC PROCEDURES'.