

NR1D2 Antibody (monoclonal) (M01)

Mouse monoclonal antibody raised against a full length recombinant NR1D2.

Catalog # AT3095a

Product Information

Application	WB, IF, E
Primary Accession	Q14995
Other Accession	BC045613
Reactivity	Human
Host	mouse
Clonality	monoclonal
Isotype	IgG1 kappa
Clone Names	1G2
Calculated MW	64643

Additional Information

Gene ID	9975
Other Names	Nuclear receptor subfamily 1 group D member 2, Orphan nuclear hormone receptor BD73, Rev-erb alpha-related receptor, RVR, Rev-erb-beta, V-erbA-related protein 1-related, EAR-1R, NR1D2
Target/Specificity	NR1D2 (AAH45613, 1 a.a. ~ 579 a.a) full-length recombinant protein with GST tag. MW of the GST tag alone is 26 KDa.
Dilution	WB~~1:500~1000 IF~~1:50~200 E~~N/A
Format	Clear, colorless solution in phosphate buffered saline, pH 7.2 .
Storage	Store at -20°C or lower. Aliquot to avoid repeated freezing and thawing.
Precautions	NR1D2 Antibody (monoclonal) (M01) is for research use only and not for use in diagnostic or therapeutic procedures.

Background

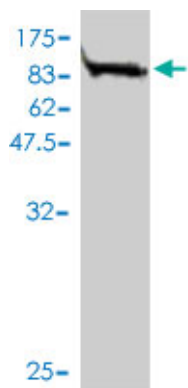
This gene encodes a member of the nuclear hormone receptor family, specifically the NR1 subfamily of receptors. The encoded protein functions as a transcriptional repressor and may play a role in circadian rhythms and carbohydrate and lipid metabolism. Alternatively spliced transcript variants have been described.

References

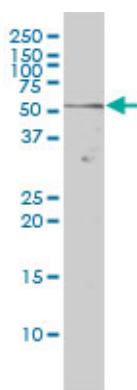
Nuclear receptor rev-erb- α circadian gene variants and lithium carbonate prophylaxis in bipolar

affective disorder. Campos-de-Sousa S, et al. J Biol Rhythms, 2010 Apr. PMID 20348464. Redundant function of REV-ERB α and β and non-essential role for Bmal1 cycling in transcriptional regulation of intracellular circadian rhythms. Liu AC, et al. PLoS Genet, 2008 Feb 29. PMID 18454201. Nuclear hormone receptors for heme: REV-ERB α and REV-ERB β are ligand-regulated components of the mammalian clock. Burris TP. Mol Endocrinol, 2008 Jul. PMID 18218725. Identification of heme as the ligand for the orphan nuclear receptors REV-ERB α and REV-ERB β . Raghuram S, et al. Nat Struct Mol Biol, 2007 Dec. PMID 18037887. The orphan nuclear receptor Rev-erbbeta recruits Tip60 and HDAC1 to regulate apolipoprotein CIII promoter. Wang J, et al. Biochim Biophys Acta, 2008 Feb. PMID 17996965.

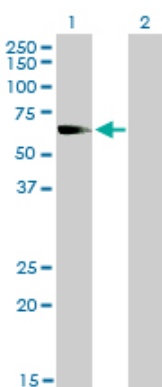
Images



Antibody Reactive Against Recombinant Protein. Western Blot detection against Immunogen (89.21 KDa) .

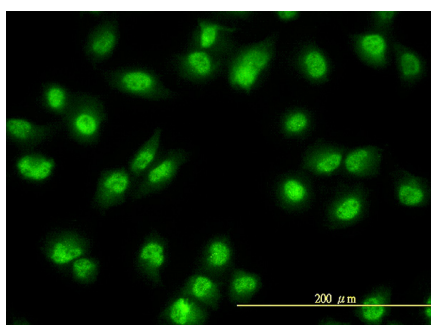


NR1D2 monoclonal antibody (M01), clone 1G2 Western Blot analysis of NR1D2 expression in HeLa (Cat # AT3095a)

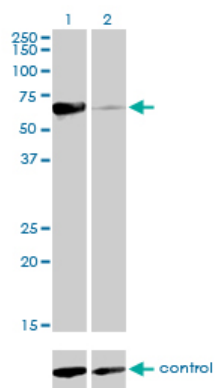


Western Blot analysis of NR1D2 expression in transfected 293T cell line by NR1D2 monoclonal antibody (M01), clone 1G2.

Lane 1: NR1D2 transfected lysate (64.7 KDa).
 Lane 2: Non-transfected lysate.



Immunofluorescence of monoclonal antibody to NR1D2 on HeLa cell. [antibody concentration 10 μ g/ml]



Detection limit for recombinant GST tagged NR1D2 is approximately 0.03ng/ml as a capture antibody.

Please note: All products are 'FOR RESEARCH USE ONLY. NOT FOR USE IN DIAGNOSTIC OR THERAPEUTIC PROCEDURES'.