

# NOV Antibody (monoclonal) (M01)

Mouse monoclonal antibody raised against a full-length recombinant NOV.

Catalog # AT3080a

## Product Information

---

|                          |                          |
|--------------------------|--------------------------|
| <b>Application</b>       | WB, E                    |
| <b>Primary Accession</b> | <a href="#">P48745</a>   |
| <b>Other Accession</b>   | <a href="#">BC015028</a> |
| <b>Reactivity</b>        | Human                    |
| <b>Host</b>              | mouse                    |
| <b>Clonality</b>         | monoclonal               |
| <b>Isotype</b>           | IgG2a Kappa              |
| <b>Clone Names</b>       | 3C2                      |
| <b>Calculated MW</b>     | 39162                    |

## Additional Information

---

|                           |   |
|---------------------------|---|
| <b>Gene ID</b>            | 4856  |
| <b>Other Names</b>        | Protein NOV homolog, NovH, CCN family member 3, Insulin-like growth factor-binding protein 9, IBP-9, IGF-binding protein 9, IGFBP-9, Nephroblastoma-overexpressed gene protein homolog, NOV, CCN3, IGFBP9, NOVH |
| <b>Target/Specificity</b> | NOV (AAH15028, 1 a.a. ~ 357 a.a) full-length recombinant protein with GST tag. MW of the GST tag alone is 26 KDa.   |
| <b>Dilution</b>           | WB~~1:500~1000 E~~N/A   |
| <b>Format</b>             | Clear, colorless solution in phosphate buffered saline, pH 7.2 .  |
| <b>Storage</b>            | Store at -20°C or lower. Aliquot to avoid repeated freezing and thawing.  |
| <b>Precautions</b>        | NOV Antibody (monoclonal) (M01) is for research use only and not for use in diagnostic or therapeutic procedures.   |

## Background

---

The protein encoded by this gene is a small secreted cysteine-rich protein and a member of the CCN family of regulatory proteins. CNN family proteins associate with the extracellular matrix and play an important role in cardiovascular and skeletal development, fibrosis and cancer development.

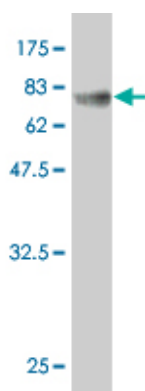
## References

---

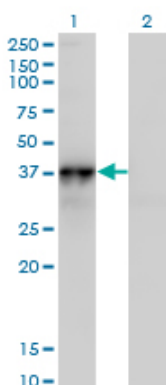
More insights into the CCN3/Connexin43 interaction complex and its role for signaling. Gellhaus A, et al. J

Cell Biochem, 2010 May. PMID 20336664.Regulation of the matricellular proteins CYR61 (CCN1) and NOV (CCN3) by hypoxia-inducible factor-1{alpha} and transforming-growth factor-{beta}3 in the human trophoblast. Wolf N, et al. Endocrinology, 2010 Jun. PMID 20237132.Antagonistic effect of the matricellular signaling protein CCN3 on TGF-beta- and Wnt-mediated fibrillinogenesis in systemic sclerosis and Marfan syndrome. Lemaire R, et al. J Invest Dermatol, 2010 Jun. PMID 20182440.CCN3 inhibits neointimal hyperplasia through modulation of smooth muscle cell growth and migration. Shimoyama T, et al. Arterioscler Thromb Vasc Biol, 2010 Apr. PMID 20139355.Differential expression of CCN1/CYR61, CCN3/NOV, CCN4/WISP1, and CCN5/WISP2 in neurofibromatosis type 1 tumorigenesis. Pasmant E, et al. J Neuropathol Exp Neurol, 2010 Jan. PMID 20010302.

## Images

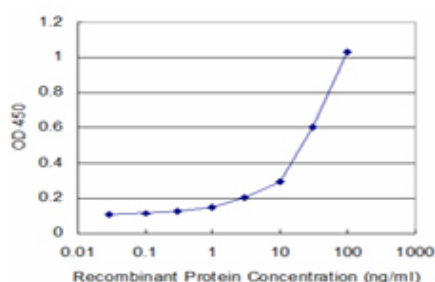


Antibody Reactive Against Recombinant Protein.Western Blot detection against Immunogen (65.01 KDa) .



Western Blot analysis of NOV expression in transfected 293T cell line by NOV monoclonal antibody (M01), clone 3C2.

Lane 1: NOV transfected lysate(39.2 KDa).  
Lane 2: Non-transfected lysate.



Detection limit for recombinant GST tagged NOV is approximately 1ng/ml as a capture antibody.

Please note: All products are 'FOR RESEARCH USE ONLY. NOT FOR USE IN DIAGNOSTIC OR THERAPEUTIC PROCEDURES'.