

## NFE2 Antibody (monoclonal) (M01)

Mouse monoclonal antibody raised against a full-length recombinant NFE2.

Catalog # AT3029a

### Product Information

---

<b>Application</b>	WB, E
<b>Primary Accession</b>	<a href="#">Q16621</a>
<b>Other Accession</b>	<a href="#">BC005044</a>
<b>Reactivity</b>	Human
<b>Host</b>	mouse
<b>Clonality</b>	monoclonal
<b>Isotype</b>	IgG2a Kappa
<b>Clone Names</b>	2C6
<b>Calculated MW</b>	41473

### Additional Information

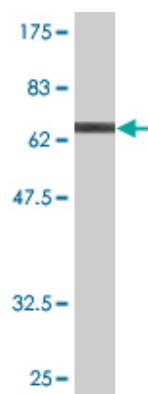
---

<b>Gene ID</b>	4778
<b>Other Names</b>	Transcription factor NF-E2 45 kDa subunit, Leucine zipper protein NF-E2, Nuclear factor, erythroid-derived 2 45 kDa subunit, p45 NF-E2, NFE2
<b>Target/Specificity</b>	NFE2 (AAH05044, 1 a.a. ~ 373 a.a) full-length recombinant protein with GST tag. MW of the GST tag alone is 26 KDa.
<b>Dilution</b>	WB~~1:500~1000 E~~N/A
<b>Format</b>	Clear, colorless solution in phosphate buffered saline, pH 7.2 .
<b>Storage</b>	Store at -20°C or lower. Aliquot to avoid repeated freezing and thawing.
<b>Precautions</b>	NFE2 Antibody (monoclonal) (M01) is for research use only and not for use in diagnostic or therapeutic procedures.

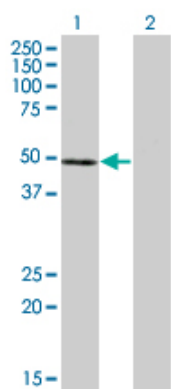
### References

---

AML1 is overexpressed in patients with myeloproliferative neoplasms and mediates JAK2V617F-independent overexpression of NF-E2. Wang W, et al. Blood, 2010 Jul 15. PMID 20339092. USF and NF-E2 cooperate to regulate the recruitment and activity of RNA polymerase II in the beta-globin gene locus. Zhou Z, et al. J Biol Chem, 2010 May 21. PMID 20236933. JNK-mediated turnover and stabilization of the transcription factor p45/NF-E2 during differentiation of murine erythroleukemia cells. Lee TL, et al. Proc Natl Acad Sci U S A, 2010 Jan 5. PMID 19966288. NF-E2 domination over Nrf2 promotes ROS accumulation and megakaryocytic maturation. Motohashi H, et al. Blood, 2010 Jan 21. PMID 19901266. A genome-wide meta-analysis identifies 22 loci associated with eight hematological parameters in the HaemGen consortium. Soranzo N, et al. Nat Genet, 2009 Nov. PMID 19820697.

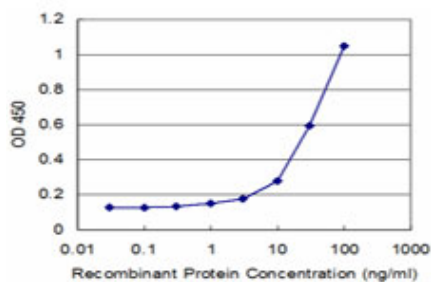


Antibody Reactive Against Recombinant Protein.Western Blot detection against Immunogen (66.77 KDa) .



Western Blot analysis of NFE2 expression in transfected 293T cell line by NFE2 monoclonal antibody (M01), clone 2C6.

Lane 1: NFE2 transfected lysate(41.5 KDa).  
Lane 2: Non-transfected lysate.



Detection limit for recombinant GST tagged NFE2 is approximately 3ng/ml as a capture antibody.

Please note: All products are 'FOR RESEARCH USE ONLY. NOT FOR USE IN DIAGNOSTIC OR THERAPEUTIC PROCEDURES'.