

# MYL5 Antibody (monoclonal) (M03)

Mouse monoclonal antibody raised against a partial recombinant MYL5.

Catalog # AT2954a

## Product Information

---

<b>Application</b>	WB, E
<b>Primary Accession</b>	<a href="#">Q02045</a>
<b>Other Accession</b>	<a href="#">NM_002477</a>
<b>Reactivity</b>	Human
<b>Host</b>	mouse
<b>Clonality</b>	monoclonal
<b>Isotype</b>	IgG1 Kappa
<b>Clone Names</b>	3D12
<b>Calculated MW</b>	19534

## Additional Information

---

<b>Gene ID</b>	4636
<b>Other Names</b>	Myosin light chain 5, Myosin regulatory light chain 5, Superfast myosin regulatory light chain 2, MYLC2, MyLC-2, MYL5
<b>Target/Specificity</b>	MYL5 (NP_002468, 4 a.a. ~ 96 a.a) partial recombinant protein with GST tag. MW of the GST tag alone is 26 KDa.
<b>Dilution</b>	WB~~1:500~1000 E~~N/A
<b>Format</b>	Clear, colorless solution in phosphate buffered saline, pH 7.2 .
<b>Storage</b>	Store at -20°C or lower. Aliquot to avoid repeated freezing and thawing.
<b>Precautions</b>	MYL5 Antibody (monoclonal) (M03) is for research use only and not for use in diagnostic or therapeutic procedures.

## Background

---

This gene encodes one of the myosin light chains, a component of the hexameric ATPase cellular motor protein myosin. Myosin is composed of two heavy chains, two nonphosphorylatable alkali light chains, and two phosphorylatable regulatory light chains. This gene product, one of the regulatory light chains, is expressed in fetal muscle and in adult retina, cerebellum, and basal ganglia.

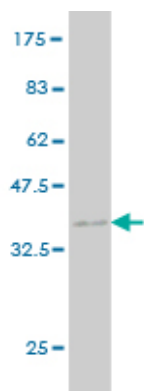
## References

---

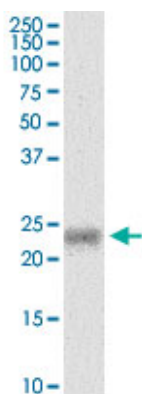
Human variation in alcohol response is influenced by variation in neuronal signaling genes. Joslyn G, et al. Alcohol Clin Exp Res, 2010 May. PMID 20201926. Complete sequencing and characterization of 21,243

full-length human cDNAs. Ota T, et al. Nat Genet, 2004 Jan. PMID 14702039. Generation and initial analysis of more than 15,000 full-length human and mouse cDNA sequences. Strausberg RL, et al. Proc Natl Acad Sci U S A, 2002 Dec 24. PMID 12477932. Myosins: a diverse superfamily. Sellers JR. Biochim Biophys Acta, 2000 Mar 17. PMID 10722873. The genomic organization of a novel regulatory myosin light chain gene (MYL5) that maps to chromosome 4p16.3 and shows different patterns of expression between primates. Collins C, et al. Hum Mol Genet, 1992 Dec. PMID 1284596.

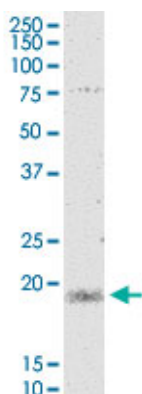
## Images



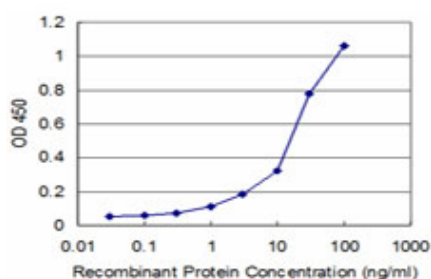
Antibody Reactive Against Recombinant Protein. Western Blot detection against Immunogen (35.97 KDa) .



MYL5 monoclonal antibody (M03), clone 3D12. Western Blot analysis of MYL5 expression in human colon.



MYL5 monoclonal antibody (M03), clone 3D12. Western Blot analysis of MYL5 expression in Jurkat.



Detection limit for recombinant GST tagged MYL5 is approximately 3ng/ml as a capture antibody.

Please note: All products are 'FOR RESEARCH USE ONLY. NOT FOR USE IN DIAGNOSTIC OR THERAPEUTIC PROCEDURES'.