

MYL4 Antibody (monoclonal) (M01)

Mouse monoclonal antibody raised against a full length recombinant MYL4.

Catalog # AT2952a

Product Information

Application	WB
Primary Accession	P12829
Other Accession	BC030228
Reactivity	Human
Host	mouse
Clonality	monoclonal
Isotype	IgG1 Kappa
Clone Names	1A11-C8
Calculated MW	21565

Additional Information

Gene ID	4635
Other Names	Myosin light chain 4, Myosin light chain 1, embryonic muscle/atrial isoform, Myosin light chain alkali GT-1 isoform, MYL4, MLC1
Target/Specificity	MYL4 (AAH30228, 1 a.a. ~ 197 a.a) full-length recombinant protein with GST tag. MW of the GST tag alone is 26 KDa.
Dilution	WB~~1:500~1000
Format	Clear, colorless solution in phosphate buffered saline, pH 7.2 .
Storage	Store at -20°C or lower. Aliquot to avoid repeated freezing and thawing.
Precautions	MYL4 Antibody (monoclonal) (M01) is for research use only and not for use in diagnostic or therapeutic procedures.

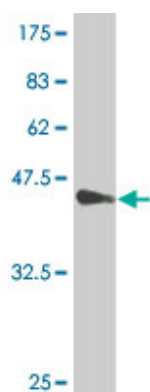
Background

Myosin is a hexameric ATPase cellular motor protein. It is composed of two myosin heavy chains, two nonphosphorylatable myosin alkali light chains, and two phosphorylatable myosin regulatory light chains. This gene encodes a myosin alkali light chain that is found in embryonic muscle and adult atria. Two alternatively spliced transcript variants encoding the same protein have been found for this gene.

References

1.Embryonic Essential Myosin Light Chain Regulates Fetal Lung Development in Rats.Santos M, Moura RS, Gonzaga S, Nogueira-Silva C, Ohlmeier S, Correia-Pinto J.Am J Respir Cell Mol Biol. 2007 Sep;37(3):330-8.

Images



Antibody Reactive Against Recombinant Protein. Western Blot detection against Immunogen (47.41 KDa) .

Please note: All products are 'FOR RESEARCH USE ONLY. NOT FOR USE IN DIAGNOSTIC OR THERAPEUTIC PROCEDURES'.