

MRRF Antibody (monoclonal) (M01)

Mouse monoclonal antibody raised against a partial recombinant MRRF.

Catalog # AT2906a

Product Information

Application	WB, IHC, E
Primary Accession	Q96E11
Other Accession	NM_138777
Reactivity	Human
Host	mouse
Clonality	monoclonal
Isotype	IgG2a Kappa
Clone Names	1D3
Calculated MW	29277

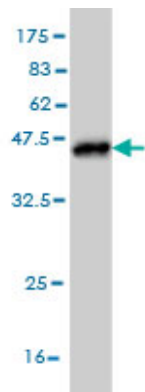
Additional Information

Gene ID	92399
Other Names	Ribosome-recycling factor, mitochondrial, RRF, Ribosome-releasing factor, mitochondrial, MRRF
Target/Specificity	MRRF (NP_620132, 163 a.a. ~ 262 a.a) partial recombinant protein with GST tag. MW of the GST tag alone is 26 KDa.
Dilution	WB~~1:500~1000 IHC~~1:100~500 E~~N/A
Format	Clear, colorless solution in phosphate buffered saline, pH 7.2 .
Storage	Store at -20°C or lower. Aliquot to avoid repeated freezing and thawing.
Precautions	MRRF Antibody (monoclonal) (M01) is for research use only and not for use in diagnostic or therapeutic procedures.

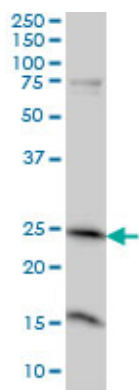
References

Personalized smoking cessation: interactions between nicotine dose, dependence and quit-success genotype score. Rose JE, et al. Mol Med, 2010 Jul-Aug. PMID 20379614.EF-G2mt is an exclusive recycling factor in mammalian mitochondrial protein synthesis. Tsuboi M, et al. Mol Cell, 2009 Aug 28. PMID 19716793.The human mitochondrial ribosome recycling factor is essential for cell viability. Rorbach J, et al. Nucleic Acids Res, 2008 Oct. PMID 18782833.The status, quality, and expansion of the NIH full-length cDNA project: the Mammalian Gene Collection (MGC). Gerhard DS, et al. Genome Res, 2004 Oct. PMID 15489334.DNA sequence and analysis of human chromosome 9. Humphray SJ, et al. Nature, 2004 May 27. PMID 15164053.

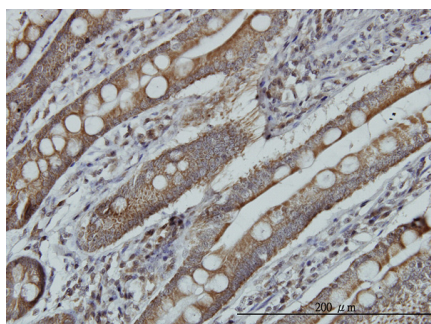
Images



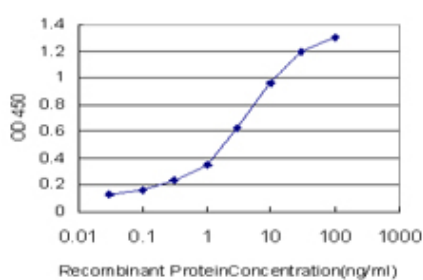
Antibody Reactive Against Recombinant Protein. Western Blot detection against Immunogen (36.74 KDa) .



MRRF monoclonal antibody (M01), clone 1D3 Western Blot analysis of MRRF expression in A-431 ((Cat # AT2906a)



Immunoperoxidase of monoclonal antibody to MRRF on formalin-fixed paraffin-embedded human small Intestine. [antibody concentration 3 ug/ml]



Detection limit for recombinant GST tagged MRRF is approximately 0.03ng/ml as a capture antibody.

Please note: All products are 'FOR RESEARCH USE ONLY. NOT FOR USE IN DIAGNOSTIC OR THERAPEUTIC PROCEDURES'.