

MDFI Antibody (monoclonal) (M07)

Mouse monoclonal antibody raised against a partial recombinant MDFI.

Catalog # AT2824a

Product Information

Application	WB, IF
Primary Accession	Q99750
Other Accession	NM_005586
Reactivity	Human
Host	mouse
Clonality	monoclonal
Isotype	IgG2a Kappa
Clone Names	3B4
Calculated MW	25029

Additional Information

Gene ID	4188
Other Names	MyoD family inhibitor, Myogenic repressor I-mf, MDFI
Target/Specificity	MDFI (NP_005577, 33 a.a. ~ 110 a.a) partial recombinant protein with GST tag. MW of the GST tag alone is 26 KDa.
Dilution	WB~~1:500~1000 IF~~1:50~200
Format	Clear, colorless solution in phosphate buffered saline, pH 7.2 .
Storage	Store at -20°C or lower. Aliquot to avoid repeated freezing and thawing.
Precautions	MDFI Antibody (monoclonal) (M07) is for research use only and not for use in diagnostic or therapeutic procedures.

Background

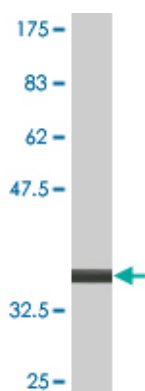
This protein is a transcription factor that negatively regulates other myogenic family proteins. Studies of the mouse homolog, I-mf, show that it interferes with myogenic factor function by masking nuclear localization signals and preventing DNA binding. Knockout mouse studies show defects in the formation of vertebrae and ribs that also involve cartilage formation in these structures.

References

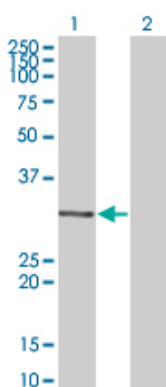
Shifted Transversal Design smart-pooling for high coverage interactome mapping. Xin X, et al. Genome Res, 2009 Jul. PMID 19447967. An empirical framework for binary interactome mapping. Venkatesan K, et al. Nat Methods, 2009 Jan. PMID 19060904. Developmental regulators containing the I-mfa domain interact with T

cyclins and Tat and modulate transcription. Wang Q, et al. J Mol Biol, 2007 Mar 30. PMID 17289077. A protein-protein interaction network for human inherited ataxias and disorders of Purkinje cell degeneration. Lim J, et al. Cell, 2006 May 19. PMID 16713569. Towards a proteome-scale map of the human protein-protein interaction network. Rual JF, et al. Nature, 2005 Oct 20. PMID 16189514.

Images



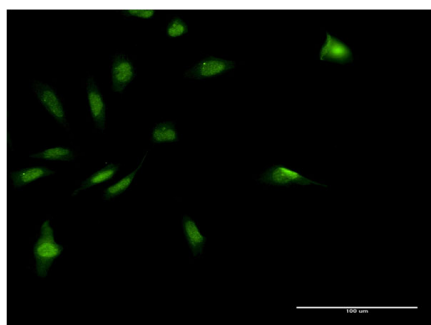
Antibody Reactive Against Recombinant Protein. Western Blot detection against Immunogen (34.32 KDa) .



Western Blot analysis of MDFI expression in transfected 293T cell line by MDFI monoclonal antibody (M07), clone 3B4.

Lane 1: MDFI transfected lysate (25.029 KDa).

Lane 2: Non-transfected lysate.



Immunofluorescence of monoclonal antibody to MDFI on HeLa cell . [antibody concentration 10 ug/ml]

Please note: All products are 'FOR RESEARCH USE ONLY. NOT FOR USE IN DIAGNOSTIC OR THERAPEUTIC PROCEDURES'.