

MCM2 Antibody (monoclonal) (M01)

Mouse monoclonal antibody raised against a partial recombinant MCM2.

Catalog # AT2818a

Product Information

Application	WB, IF, IP, E
Primary Accession	P49736
Other Accession	BC007670
Reactivity	Human
Host	mouse
Clonality	monoclonal
Isotype	IgG2a Kappa
Clone Names	6A8
Calculated MW	101896

Additional Information

Gene ID	4171
Other Names	DNA replication licensing factor MCM2, Minichromosome maintenance protein 2 homolog, Nuclear protein BM28, MCM2, BM28, CCNL1, CDCL1, KIAA0030
Target/Specificity	MCM2 (AAH07670, 805 a.a. ~ 904 a.a) partial recombinant protein with GST tag. MW of the GST tag alone is 26 KDa.
Dilution	WB~~1:500~1000 IF~~1:50~200 IP~~N/A E~~N/A
Format	Clear, colorless solution in phosphate buffered saline, pH 7.2 .
Storage	Store at -20°C or lower. Aliquot to avoid repeated freezing and thawing.
Precautions	MCM2 Antibody (monoclonal) (M01) is for research use only and not for use in diagnostic or therapeutic procedures.

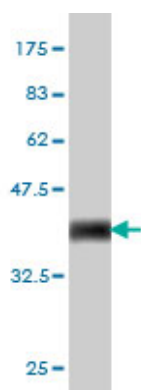
Background

The protein encoded by this gene is one of the highly conserved mini-chromosome maintenance proteins (MCM) that are involved in the initiation of eukaryotic genome replication. The hexameric protein complex formed by MCM proteins is a key component of the pre-replication complex (pre_RC) and may be involved in the formation of replication forks and in the recruitment of other DNA replication related proteins. This protein forms a complex with MCM4, 6, and 7, and has been shown to regulate the helicase activity of the complex. This protein is phosphorylated, and thus regulated by, protein kinases CDC2 and CDC7.

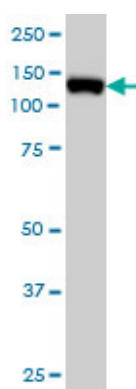
References

Immunohistochemical patterns of ProEx C in vulvar squamous lesions: detection of overexpression of MCM2 and TOP2A. Chen H, et al. Am J Surg Pathol, 2010 Sep. PMID 20697251. Evaluation of candidate stromal epithelial cross-talk genes identifies association between risk of serous ovarian cancer and TERT, a cancer susceptibility hot-spot. Johnatty SE, et al. PLoS Genet, 2010 Jul 8. PMID 20628624. Centrosome-related genes, genetic variation, and risk of breast cancer. Olson JE, et al. Breast Cancer Res Treat, 2010 May 28. PMID 20508983. Human cytomegalovirus protein pUL117 targets the mini-chromosome maintenance complex and suppresses cellular DNA synthesis. Qian Z, et al. PLoS Pathog, 2010 Mar 19. PMID 20333247. Determination of cell proliferation using Mcm2 antigen and evaluation of apoptosis and TGF-beta1 expression in GH-secreting or clinically nonfunctioning pituitary adenomas. Dallago CM, et al. Endocr Pathol, 2010 Mar. PMID 20174894.

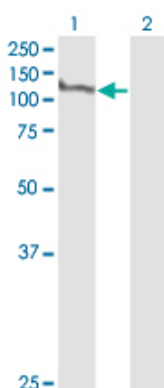
Images



Antibody Reactive Against Recombinant Protein. Western Blot detection against Immunogen (36.63 KDa) .



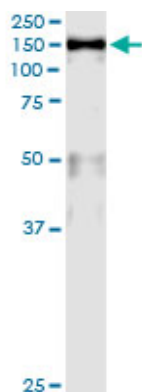
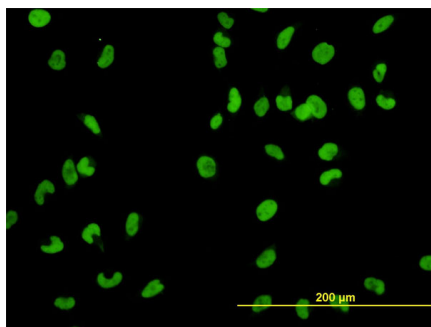
MCM2 monoclonal antibody (M01), clone 6A8 Western Blot analysis of MCM2 expression in HeLa S3 NE (Cat # AT2818a)



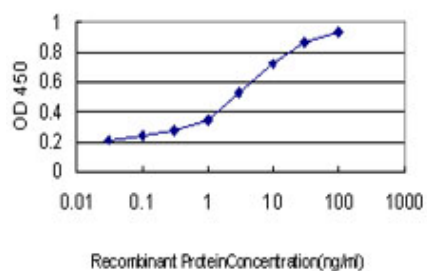
Western Blot analysis of MCM2 expression in transfected 293T cell line by MCM2 monoclonal antibody (M01), clone 6A8.

Lane 1: MCM2 transfected lysate(101.9 KDa).
Lane 2: Non-transfected lysate.

Immunofluorescence of monoclonal antibody to MCM2 on HeLa cell. [antibody concentration 10 ug/ml]



Immunoprecipitation of MCM2 transfected lysate using anti-MCM2 monoclonal antibody and Protein A Magnetic Bead ([U0007](#)), and immunoblotted with MCM2 MaxPab rabbit polyclonal antibody.



Detection limit for recombinant GST tagged MCM2 is approximately 0.1 ng/ml as a capture antibody.

Please note: All products are 'FOR RESEARCH USE ONLY. NOT FOR USE IN DIAGNOSTIC OR THERAPEUTIC PROCEDURES'.