

MBNL1 Antibody (monoclonal) (M02)

Mouse monoclonal antibody raised against a full length recombinant MBNL1.

Catalog # AT2814a

Product Information

Application	WB, IHC, IF, E
Primary Accession	Q9NR56
Other Accession	BC043493
Reactivity	Human
Host	mouse
Clonality	monoclonal
Isotype	IgG2a Kappa
Clone Names	3E8
Calculated MW	41817

Additional Information

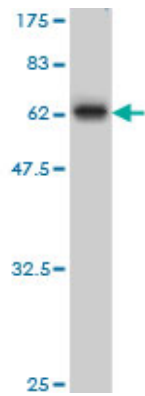
Gene ID	4154
Other Names	Muscleblind-like protein 1, Triplet-expansion RNA-binding protein, MBNL1, EXP, KIAA0428, MBNL
Target/Specificity	MBNL1 (AAH43493, 1 a.a. ~ 382 a.a) full-length recombinant protein with GST tag. MW of the GST tag alone is 26 KDa.
Dilution	WB~~1:500~1000 IHC~~1:100~500 IF~~1:50~200 E~~N/A
Format	Clear, colorless solution in phosphate buffered saline, pH 7.2 .
Storage	Store at -20°C or lower. Aliquot to avoid repeated freezing and thawing.
Precautions	MBNL1 Antibody (monoclonal) (M02) is for research use only and not for use in diagnostic or therapeutic procedures.

References

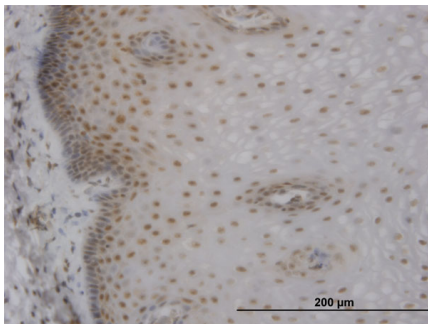
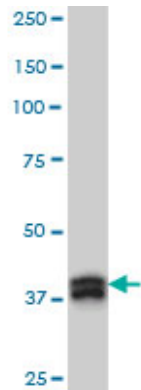
1.Development of an AP-FRET Based Analysis for Characterizing RNA-Protein Interactions in Myotonic Dystrophy (DM1).Rehman S, Gladman JT, Periasamy A, Sun Y, Mahadevan MSPLoS One. 2014 Apr 29;9(4):e95957. doi: 10.1371/journal.pone.0095957. eCollection 2014.

Images

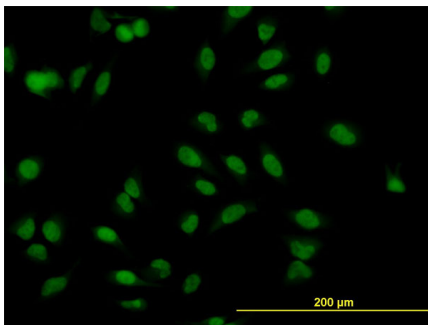
Antibody Reactive Against Recombinant Protein.Western Blot detection against Immunogen (67.76 KDa) .



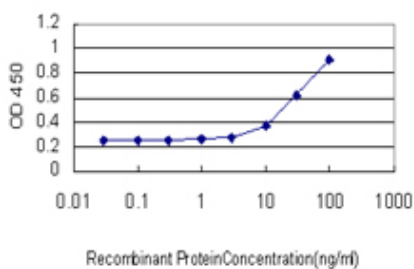
MBNL1 monoclonal antibody (M02), clone 3E7 Western Blot analysis of MBNL1 expression in HeLa S3 NE (Cat # AT2814a)



Immunoperoxidase of monoclonal antibody to MBNL1 on formalin-fixed paraffin-embedded human esophagus. [antibody concentration 0.75 ug/ml]



Immunofluorescence of monoclonal antibody to MBNL1 on HeLa cell. [antibody concentration 10 ug/ml]



Detection limit for recombinant GST tagged MBNL1 is approximately 3ng/ml as a capture antibody.

Please note: All products are 'FOR RESEARCH USE ONLY. NOT FOR USE IN DIAGNOSTIC OR THERAPEUTIC PROCEDURES'.