

MBNL1 Antibody (monoclonal) (M01)

Mouse monoclonal antibody raised against a full length recombinant MBNL1.

Catalog # AT2813a

Product Information

Application	WB, E
Primary Accession	Q9NR56
Other Accession	BC050535
Reactivity	Human
Host	mouse
Clonality	monoclonal
Isotype	IgG1 Kappa
Clone Names	1D11
Calculated MW	41817

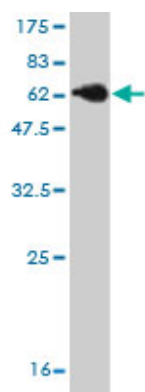
Additional Information

Gene ID	4154
Other Names	Muscleblind-like protein 1, Triplet-expansion RNA-binding protein, MBNL1, EXP, KIAA0428, MBNL
Target/Specificity	MBNL1 (AAH50535, 1 a.a. ~ 343 a.a) full-length recombinant protein with GST tag. MW of the GST tag alone is 26 KDa.
Dilution	WB~~1:500~1000 E~~N/A
Format	Clear, colorless solution in phosphate buffered saline, pH 7.2 .
Storage	Store at -20°C or lower. Aliquot to avoid repeated freezing and thawing.
Precautions	MBNL1 Antibody (monoclonal) (M01) is for research use only and not for use in diagnostic or therapeutic procedures.

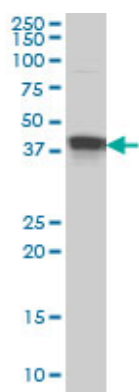
References

Muscleblind-like 1 (Mbnl1) promotes insulin receptor exon 11 inclusion via binding to a downstream evolutionarily conserved intronic enhancer. Sen S, et al. J Biol Chem, 2010 Aug 13. PMID 20519504. A simple ligand that selectively targets CUG trinucleotide repeats and inhibits MBNL protein binding. Arambula JF, et al. Proc Natl Acad Sci U S A, 2009 Sep 22. PMID 19805260. Ribonuclear inclusions and MBNL1 nuclear sequestration do not affect myoblast differentiation but alter gene splicing in myotonic dystrophy type 2. Cardani R, et al. Neuromuscul Disord, 2009 May. PMID 19345584. Muscleblind-like proteins: similarities and differences in normal and myotonic dystrophy muscle. Holt I, et al. Am J Pathol, 2009 Jan. PMID 19095965. Structural insights into RNA recognition by the alternative-splicing regulator muscleblind-like MBNL1. Teplova M, et al. Nat Struct Mol Biol, 2008 Dec. PMID 19043415.

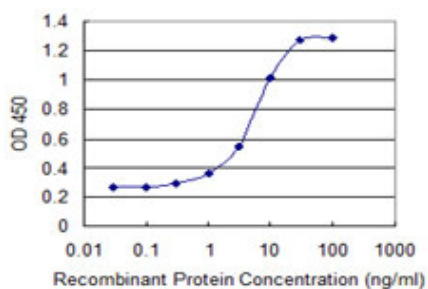
Images



Antibody Reactive Against Recombinant Protein. Western Blot detection against Immunogen (63.47 KDa) .



MBNL1 monoclonal antibody (M01), clone 1D11 Western Blot analysis of MBNL1 expression in HeLa S3 NE (Cat # AT2813a)



Detection limit for recombinant GST tagged MBNL1 is 0.1 ng/ml as a capture antibody.

Please note: All products are 'FOR RESEARCH USE ONLY. NOT FOR USE IN DIAGNOSTIC OR THERAPEUTIC PROCEDURES'.