

# MAGOH Antibody (monoclonal) (M01)

Mouse monoclonal antibody raised against a partial recombinant MAGOH.

Catalog # AT2765a

## Product Information

---

<b>Application</b>	WB, IF, E
<b>Primary Accession</b>	<a href="#">P61326</a>
<b>Other Accession</b>	<a href="#">NM_002370</a>
<b>Reactivity</b>	Human
<b>Host</b>	mouse
<b>Clonality</b>	monoclonal
<b>Isotype</b>	IgG1 Kappa
<b>Clone Names</b>	6E12
<b>Calculated MW</b>	17164

## Additional Information

---

<b>Gene ID</b>	4116
<b>Other Names</b>	Protein mago nashi homolog, MAGOH, MAGOHA
<b>Target/Specificity</b>	MAGOH (NP_002361, 1 a.a. ~ 110 a.a) partial recombinant protein with GST tag. MW of the GST tag alone is 26 KDa.
<b>Dilution</b>	WB~~1:500~1000 IF~~1:50~200 E~~N/A
<b>Format</b>	Clear, colorless solution in phosphate buffered saline, pH 7.2 .
<b>Storage</b>	Store at -20°C or lower. Aliquot to avoid repeated freezing and thawing.
<b>Precautions</b>	MAGOH Antibody (monoclonal) (M01) is for research use only and not for use in diagnostic or therapeutic procedures.

## Background

---

Drosophila that have mutations in their mago nashi (grandchildless) gene produce progeny with defects in germlasm assembly and germline development. This gene encodes the mammalian mago nashi homolog. In mammals, mRNA expression is not limited to the germ plasm, but is expressed ubiquitously in adult tissues and can be induced by serum stimulation of quiescent fibroblasts.

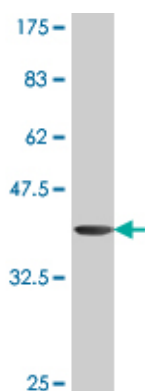
## References

---

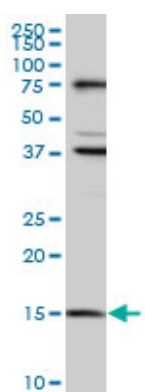
Disassembly of exon junction complexes by PYM. Gehring NH, et al. Cell, 2009 May 1. PMID 19410547. The exon-junction complex proteins, Y14 and MAGOH regulate STAT3 activation. Muromoto R, et al. Biochem Biophys Res Commun, 2009 Apr 24. PMID 19254694. PYM binds the cytoplasmic exon-junction complex and

ribosomes to enhance translation of spliced mRNAs. Diem MD, et al. Nat Struct Mol Biol, 2007 Dec. PMID 18026120. Large-scale mapping of human protein-protein interactions by mass spectrometry. Ewing RM, et al. Mol Syst Biol, 2007. PMID 17353931. Structure of the exon junction core complex with a trapped DEAD-box ATPase bound to RNA. Andersen CB, et al. Science, 2006 Sep 29. PMID 16931718.

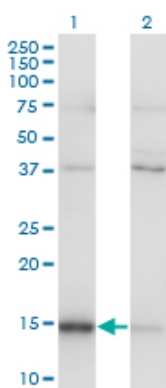
## Images



Antibody Reactive Against Recombinant Protein. Western Blot detection against Immunogen (37.84 kDa) .

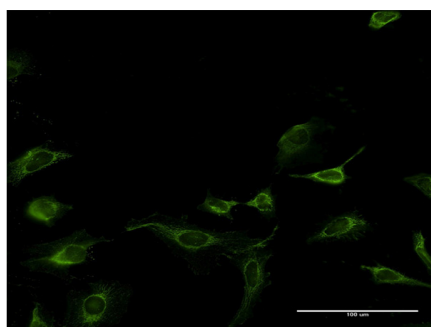


MAGOH monoclonal antibody (M01), clone 6E11. Western Blot analysis of MAGOH expression in HeLa (Cat # AT2765a )



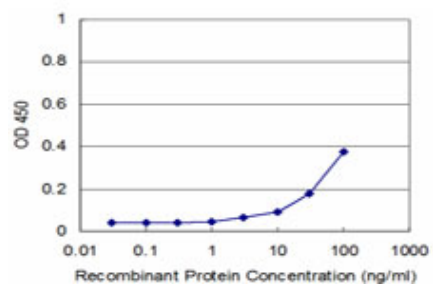
Western Blot analysis of MAGOH expression in transfected 293T cell line by MAGOH monoclonal antibody (M01), clone 6E11.

Lane 1: MAGOH transfected lysate (17.2 kDa).  
Lane 2: Non-transfected lysate.



Immunofluorescence of monoclonal antibody to MAGOH on HeLa cell . [antibody concentration 10 ug/ml]

Detection limit for recombinant GST tagged MAGOH is approximately 3ng/ml as a capture antibody.



Please note: All products are 'FOR RESEARCH USE ONLY. NOT FOR USE IN DIAGNOSTIC OR THERAPEUTIC PROCEDURES'.