

## MAD2L1BP Antibody (monoclonal) (M03)

Mouse monoclonal antibody raised against a full-length recombinant MAD2L1BP.

Catalog # AT2759a

### Product Information

---

Application	WB, IF, E
Primary Accession	<a href="#">Q15013</a>
Other Accession	<a href="#">BC002904</a>
Reactivity	Human
Host	mouse
Clonality	monoclonal
Isotype	IgG2a Kappa
Clone Names	4G11
Calculated MW	31052

### Additional Information

---

Gene ID	9587
Other Names	MAD2L1-binding protein, Caught by MAD2 protein, MAD2L1BP, CMT2, KIAA0110
Target/Specificity	MAD2L1BP (AAH02904, 1 a.a. ~ 274 a.a) full-length recombinant protein with GST tag. MW of the GST tag alone is 26 KDa.
Dilution	WB~~1:500~1000 IF~~1:50~200 E~~N/A
Format	Clear, colorless solution in phosphate buffered saline, pH 7.2 .
Storage	Store at -20°C or lower. Aliquot to avoid repeated freezing and thawing.
Precautions	MAD2L1BP Antibody (monoclonal) (M03) is for research use only and not for use in diagnostic or therapeutic procedures.

### Background

---

The protein encoded by this gene was identified as a binding protein of the MAD2 mitotic arrest deficient-like 1 (MAD2/MAD2L1). MAD2 is a key component of the spindle checkpoint that delays the onset of anaphase until all the kinetochores are attached to the spindle. This protein may interact with the spindle checkpoint and coordinate cell cycle events in late mitosis. Alternatively spliced transcript variants encoding distinct isoforms have been observed.

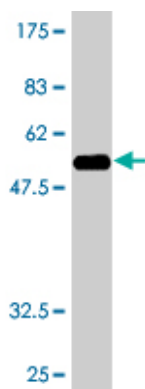
### References

---

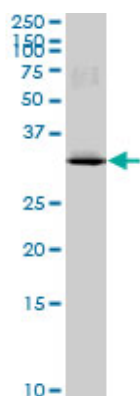
p31comet Induces cellular senescence through p21 accumulation and Mad2 disruption. Yun M, et al. Mol

Cancer Res, 2009 Mar. PMID 19276188. An empirical framework for binary interactome mapping. Venkatesan K, et al. Nat Methods, 2009 Jan. PMID 19060904. p31 comet blocks Mad2 activation through structural mimicry. Yang M, et al. Cell, 2007 Nov 16. PMID 18022368. Mutation analysis of p31 comet gene, a negative regulator of Mad2, in human hepatocellular carcinoma. Yun MY, et al. Exp Mol Med, 2007 Aug 31. PMID 17934339. Towards a proteome-scale map of the human protein-protein interaction network. Rual JF, et al. Nature, 2005 Oct 20. PMID 16189514.

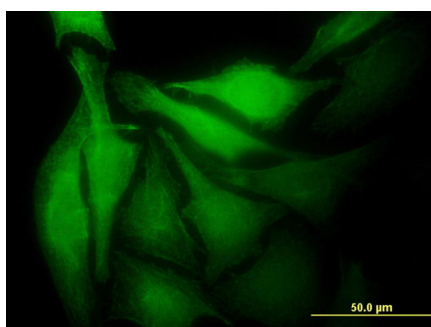
## Images



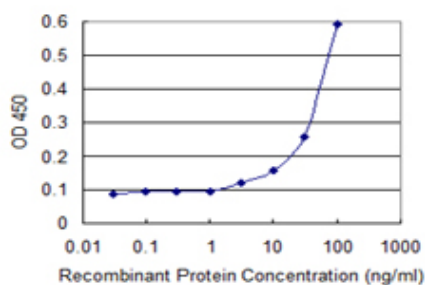
Antibody Reactive Against Recombinant Protein. Western Blot detection against Immunogen (55.88 KDa) .



MAD2L1BP monoclonal antibody (M03), clone 4G11. Western Blot analysis of MAD2L1BP expression in HeLa S3 NE (Cat # AT2759a)



Immunofluorescence of monoclonal antibody to MAD2L1BP on HeLa cell . [antibody concentration 10 ug/ml]



Detection limit for recombinant GST tagged MAD2L1BP is 1 ng/ml as a capture antibody.

Please note: All products are 'FOR RESEARCH USE ONLY. NOT FOR USE IN DIAGNOSTIC OR THERAPEUTIC PROCEDURES'.