

LOXL2 Antibody (monoclonal) (M01)

Mouse monoclonal antibody raised against a partial recombinant LOXL2.

Catalog # AT2735a

Product Information

Application	WB, E
Primary Accession	Q9Y4K0
Other Accession	NM_002318
Reactivity	Human
Host	mouse
Clonality	monoclonal
Isotype	IgG2b Kappa
Clone Names	5D2
Calculated MW	86725

Additional Information

Gene ID	4017
Other Names	Lysyl oxidase homolog 2, Lysyl oxidase-like protein 2, Lysyl oxidase-related protein 2, Lysyl oxidase-related protein WS9-14, LOXL2
Target/Specificity	LOXL2 (NP_002309, 675 a.a. ~ 773 a.a) partial recombinant protein with GST tag. MW of the GST tag alone is 26 KDa.
Dilution	WB~~1:500~1000 E~~N/A
Format	Clear, colorless solution in phosphate buffered saline, pH 7.2 .
Storage	Store at -20°C or lower. Aliquot to avoid repeated freezing and thawing.
Precautions	LOXL2 Antibody (monoclonal) (M01) is for research use only and not for use in diagnostic or therapeutic procedures.

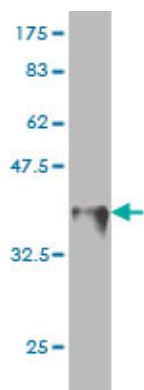
Background

This gene encodes a member of the lysyl oxidase gene family. The prototypic member of the family is essential to the biogenesis of connective tissue, encoding an extracellular copper-dependent amine oxidase that catalyses the first step in the formation of crosslinks in collagens and elastin. A highly conserved amino acid sequence at the C-terminus end appears to be sufficient for amine oxidase activity, suggesting that each family member may retain this function. The N-terminus is poorly conserved and may impart additional roles in developmental regulation, senescence, tumor suppression, cell growth control, and chemotaxis to each member of the family.

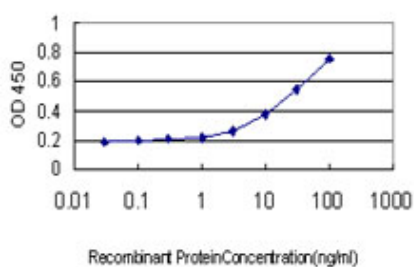
References

1.Reduced nuclear and ectopic cytoplasmic expression of lysyl oxidase-like 2 is associated with lymph node metastasis and poor prognosis in esophageal squamous cell carcinoma.Li TY, Xu LY, Wu ZY, Liao LD, Shen JH, Xu XE, Du ZP, Zhao Q, Li EM.Hum Pathol. 2011 Dec 26.2.Epithelial-Mesenchymal Transition Induced by Hepatitis C Virus Core Protein in Cholangiocarcinoma.Li T, Li D, Cheng L, Wu H, Gao Z, Liu Z, Jiang W, Gao YH, Tian F, Zhao L, Wang S.Ann Surg Oncol. 2010 Feb 17. [Epub ahead of print]3.Reciprocal regulation of LOX and LOXL2 expression during cell adhesion and terminal differentiation in epidermal keratinocytes.Fujimoto E, Tajima S.J Dermatol Sci. 2009 Aug;55(2):91-8. Epub 2009 Apr 24.

Images



Antibody Reactive Against Recombinant Protein.Western Blot detection against Immunogen (36.63 KDa) .



Detection limit for recombinant GST tagged LOXL2 is approximately 0.3ng/ml as a capture antibody.

Please note: All products are 'FOR RESEARCH USE ONLY. NOT FOR USE IN DIAGNOSTIC OR THERAPEUTIC PROCEDURES'.