

LDB1 Antibody (monoclonal) (M02)

Mouse monoclonal antibody raised against a partial recombinant LDB1.

Catalog # AT2681a

Product Information

Application	WB, E
Primary Accession	Q86U70
Other Accession	NM_003893
Reactivity	Human
Host	mouse
Clonality	monoclonal
Isotype	IgG2b Kappa
Clone Names	2G9
Calculated MW	46533

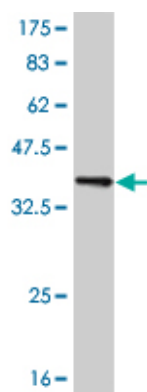
Additional Information

Gene ID	8861
Other Names	LIM domain-binding protein 1, LDB-1, Carboxyl-terminal LIM domain-binding protein 2, CLIM-2, LIM domain-binding factor CLIM2, hLdb1, Nuclear LIM interactor, LDB1, CLIM2
Target/Specificity	LDB1 (NP_003884, 1 a.a. ~ 110 a.a) partial recombinant protein with GST tag. MW of the GST tag alone is 26 KDa.
Dilution	WB~~1:500~1000 E~~N/A
Format	Clear, colorless solution in phosphate buffered saline, pH 7.2 .
Storage	Store at -20°C or lower. Aliquot to avoid repeated freezing and thawing.
Precautions	LDB1 Antibody (monoclonal) (M02) is for research use only and not for use in diagnostic or therapeutic procedures.

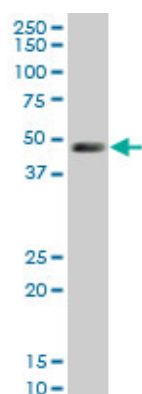
References

Transcription intermediary factor 1gamma decreases protein expression of the transcriptional cofactor, LIM-domain-binding 1. Howard PW, et al. Biochem Biophys Res Commun, 2010 Jun 4. PMID 20447379. Regulation of LIM-domain-binding 1 protein expression by ubiquitination of Lys134. Howard PW, et al. Biochem J, 2010 Jul 1. PMID 20423330. Regulation of estrogen-dependent transcription by the LIM cofactors CLIM and RLIM in breast cancer. Johnsen SA, et al. Cancer Res, 2009 Jan 1. PMID 19117995. Implementing the LIM code: the structural basis for cell type-specific assembly of LIM-homeodomain complexes. Bhati M, et al. EMBO J, 2008 Jul 23. PMID 18583962. Assembly of the oncogenic DNA-binding complex LMO2-Ldb1-TAL1-E12. Ryan DP, et al. Proteins, 2008 Mar. PMID 17910069.

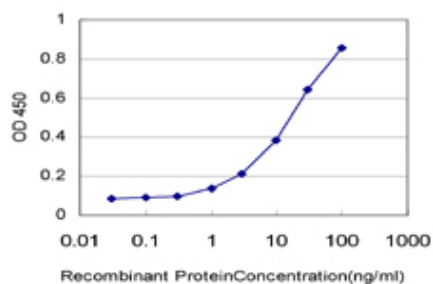
Images



Antibody Reactive Against Recombinant Protein. Western Blot detection against Immunogen (37.84 KDa) .



LDB1 monoclonal antibody (M02), clone 2G9 Western Blot analysis of LDB1 expression in IMR-32 ((Cat # AT2681a)



Detection limit for recombinant GST tagged LDB1 is approximately 1ng/ml as a capture antibody.

Please note: All products are 'FOR RESEARCH USE ONLY. NOT FOR USE IN DIAGNOSTIC OR THERAPEUTIC PROCEDURES'.