

# LAMB3 Antibody (monoclonal) (M01)

Mouse monoclonal antibody raised against a partial recombinant LAMB3.

Catalog # AT2670a

## Product Information

---

Application	WB, IF, E
Primary Accession	<a href="#">Q13751</a>
Other Accession	<a href="#">NM_000228</a>
Reactivity	Human
Host	Mouse
Clonality	monoclonal
Isotype	IgG1 Kappa
Clone Names	2G10
Calculated MW	129572

## Additional Information

---

Gene ID	3914
Other Names	Laminin subunit beta-3, Epiligrin subunit bata, Kalinin B1 chain, Kalinin subunit beta, Laminin B1k chain, Laminin-5 subunit beta, Nicein subunit beta, LAMB3, LAMNB1
Target/Specificity	LAMB3 (NP_000219, 1064 a.a. ~ 1171 a.a) partial recombinant protein with GST tag. MW of the GST tag alone is 26 KDa.
Dilution	WB~~1:500~1000 IF~~1:50~200 E~~N/A
Format	Clear, colorless solution in phosphate buffered saline, pH 7.2 .
Storage	Store at -20°C or lower. Aliquot to avoid repeated freezing and thawing.
Precautions	LAMB3 Antibody (monoclonal) (M01) is for research use only and not for use in diagnostic or therapeutic procedures.

## Background

---

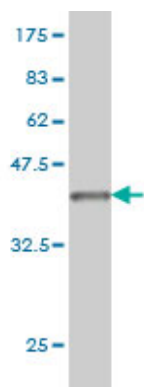
The product encoded by this gene is a laminin that belongs to a family of basement membrane proteins. This protein is a beta subunit laminin, which together with an alpha and a gamma subunit, forms laminin-5. Mutations in this gene cause epidermolysis bullosa junctional Herlitz type, and generalized atrophic benign epidermolysis bullosa, diseases that are characterized by blistering of the skin. Multiple alternatively spliced transcript variants that encode the same protein have been found for this gene.

## References

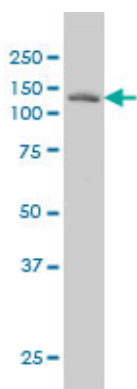
---

1.Clinical significance of LAMB3 and COL7A1 mRNA in esophageal squamous cell carcinoma.Kita Y, Mimori K, Tanaka F, Matsumoto T, Haraguchi N, Ishikawa K, Matsuzaki S, Fukuyoshi Y, Inoue H, Natsugoe S, Aikou T, Mori M.Eur J Surg Oncol. 2009 Jan;35(1):52-58. Epub 2008 Mar 10.

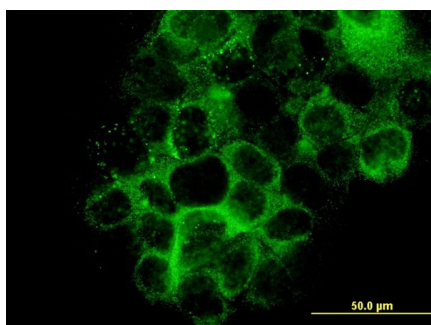
## Images



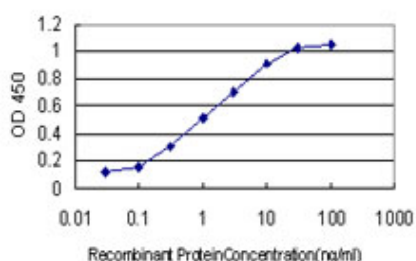
Antibody Reactive Against Recombinant Protein.Western Blot detection against Immunogen (37.62 KDa) .



LAMB3 monoclonal antibody (M01), clone 2G10 Western Blot analysis of LAMB3 expression in A-431 ( (Cat # AT2670a )



Immunofluorescence of monoclonal antibody to LAMB3 on A-431 cell. [antibody concentration 10 ug/ml]



Detection limit for recombinant GST tagged LAMB3 is approximately 0.03ng/ml as a capture antibody.

Please note: All products are 'FOR RESEARCH USE ONLY. NOT FOR USE IN DIAGNOSTIC OR THERAPEUTIC PROCEDURES'.