

KLRB1 Antibody (monoclonal) (M01)

Mouse monoclonal antibody raised against a partial recombinant KLRB1.

Catalog # AT2643a

Product Information

Application	WB, E
Primary Accession	Q12918
Other Accession	NM_002258
Reactivity	Human
Host	mouse
Clonality	monoclonal
Isotype	IgG1 Kappa
Clone Names	2F3
Calculated MW	25415

Additional Information

Gene ID	3820
Other Names	Killer cell lectin-like receptor subfamily B member 1, C-type lectin domain family 5 member B, HNKRP-1a, NKR-P1A, Natural killer cell surface protein P1A, CD161, KLRB1, CLEC5B, NKRP1A
Target/Specificity	KLRB1 (NP_002249, 126 a.a. ~ 225 a.a) partial recombinant protein with GST tag. MW of the GST tag alone is 26 KDa.
Dilution	WB~~1:500~1000 E~~N/A
Format	Clear, colorless solution in phosphate buffered saline, pH 7.2 .
Storage	Store at -20°C or lower. Aliquot to avoid repeated freezing and thawing.
Precautions	KLRB1 Antibody (monoclonal) (M01) is for research use only and not for use in diagnostic or therapeutic procedures.

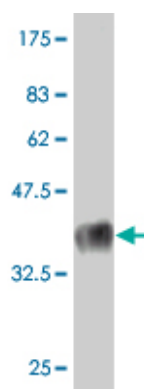
Background

Natural killer (NK) cells are lymphocytes that mediate cytotoxicity and secrete cytokines after immune stimulation. Several genes of the C-type lectin superfamily, including the rodent NKRP1 family of glycoproteins, are expressed by NK cells and may be involved in the regulation of NK cell function. The KLRB1 protein contains an extracellular domain with several motifs characteristic of C-type lectins, a transmembrane domain, and a cytoplasmic domain. The KLRB1 protein is classified as a type II membrane protein because it has an external C terminus.

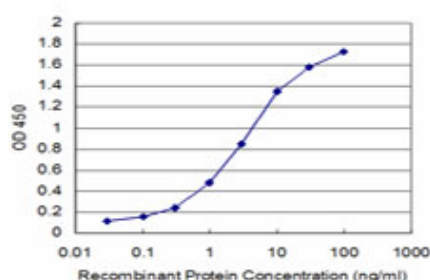
References

CD161 receptor participates in both impairing NK cell cytotoxicity and the response to glycans and vimentin in patients with rheumatoid arthritis. Richter J, et al. Clin Immunol, 2010 Jul. PMID 20359956. New genetic associations detected in a host response study to hepatitis B vaccine. Davila S, et al. Genes Immun, 2010 Apr. PMID 20237496. Analysis of CD161 expression on human CD8+ T cells defines a distinct functional subset with tissue-homing properties. Billerbeck E, et al. Proc Natl Acad Sci U S A, 2010 Feb 16. PMID 20133607. Replication of CD58 and CLEC16A as genome-wide significant risk genes for multiple sclerosis. Hoppenbrouwers IA, et al. J Hum Genet, 2009 Nov. PMID 19834503. Distribution of several activating and inhibitory receptors on CD3-CD16+ NK cells and their correlation with NK cell function in healthy individuals. Konjević G, et al. J Membr Biol, 2009 Aug. PMID 19711124.

Images



Antibody Reactive Against Recombinant Protein. Western Blot detection against Immunogen (36.74 kDa) .



Detection limit for recombinant GST tagged KLRB1 is approximately 0.1 ng/ml as a capture antibody.

Please note: All products are 'FOR RESEARCH USE ONLY. NOT FOR USE IN DIAGNOSTIC OR THERAPEUTIC PROCEDURES'.