

KIAA2002 Antibody (monoclonal) (M02)

Mouse monoclonal antibody raised against a partial recombinant KIAA2002.

Catalog # AT2617a

Product Information

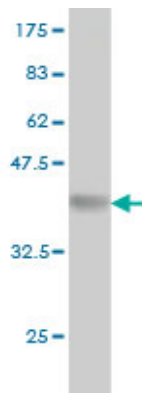
Application	WB, IF, E
Primary Accession	Q9H792
Other Accession	XM_370878
Reactivity	Human
Host	mouse
Clonality	monoclonal
Isotype	IgG1 Kappa
Clone Names	3E8
Calculated MW	193106

Additional Information

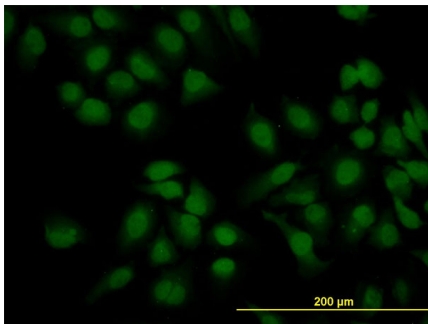
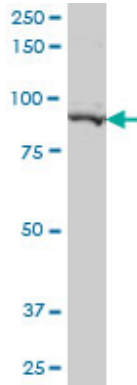
Gene ID	79834
Other Names	Pseudopodium-enriched atypical kinase 1, Sugen kinase 269, Tyrosine-protein kinase SgK269, PEAK1, KIAA2002
Target/Specificity	KIAA2002 (XP_370878, 1151 a.a. ~ 1250 a.a) partial recombinant protein with GST tag. MW of the GST tag alone is 26 KDa.
Dilution	WB~~1:500~1000 IF~~1:50~200 E~~N/A
Format	Clear, colorless solution in phosphate buffered saline, pH 7.2 .
Storage	Store at -20°C or lower. Aliquot to avoid repeated freezing and thawing.
Precautions	KIAA2002 Antibody (monoclonal) (M02) is for research use only and not for use in diagnostic or therapeutic procedures.

Images

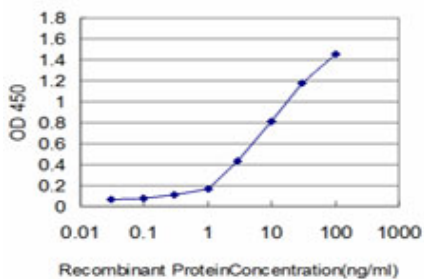
Antibody Reactive Against Recombinant Protein.Western
Blot detection against Immunogen (36.63 KDa) .



KIAA2002 monoclonal antibody (M02), clone 3E7 Western Blot analysis of KIAA2002 expression in MCF-7 (Cat # AT2617a)



Immunofluorescence of monoclonal antibody to KIAA2002 on HeLa cell. [antibody concentration 10 ug/ml]



Detection limit for recombinant GST tagged KIAA2002 is approximately 0.3ng/ml as a capture antibody.

Citations

- [Pseudopodium-enriched atypical kinase 1 regulates the cytoskeleton and cancer progression \[corrected\]](#).

Please note: All products are 'FOR RESEARCH USE ONLY. NOT FOR USE IN DIAGNOSTIC OR THERAPEUTIC PROCEDURES'.