

KCTD9 Antibody (monoclonal) (M01)

Mouse monoclonal antibody raised against a full length recombinant KCTD9.

Catalog # AT2606a

Product Information

Application	WB, E
Primary Accession	Q7L273
Other Accession	BC021216
Reactivity	Human
Host	mouse
Clonality	monoclonal
Isotype	IgG2b Kappa
Clone Names	1F3
Calculated MW	42567

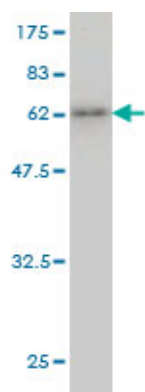
Additional Information

Gene ID	54793
Other Names	BTB/POZ domain-containing protein KCTD9, KCTD9
Target/Specificity	KCTD9 (AAH21216, 1 a.a. ~ 389 a.a) full-length recombinant protein with GST tag. MW of the GST tag alone is 26 KDa.
Dilution	WB~~1:500~1000 E~~N/A
Format	Clear, colorless solution in phosphate buffered saline, pH 7.2 .
Storage	Store at -20°C or lower. Aliquot to avoid repeated freezing and thawing.
Precautions	KCTD9 Antibody (monoclonal) (M01) is for research use only and not for use in diagnostic or therapeutic procedures.

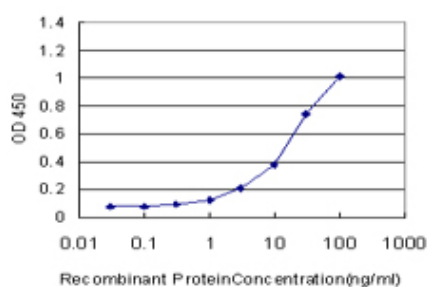
References

[Increased expression of KCTD9, a novel potassium channel related gene, correlates with disease severity in patients with viral hepatitis B] Zhou YY, et al. Zhonghua Gan Zang Bing Za Zhi, 2008 Nov. PMID 19032868. Diversification of transcriptional modulation: large-scale identification and characterization of putative alternative promoters of human genes. Kimura K, et al. Genome Res, 2006 Jan. PMID 16344560. The status, quality, and expansion of the NIH full-length cDNA project: the Mammalian Gene Collection (MGC). Gerhard DS, et al. Genome Res, 2004 Oct. PMID 15489334. Complete sequencing and characterization of 21,243 full-length human cDNAs. Ota T, et al. Nat Genet, 2004 Jan. PMID 14702039. Generation and initial analysis of more than 15,000 full-length human and mouse cDNA sequences. Strausberg RL, et al. Proc Natl Acad Sci U S A, 2002 Dec 24. PMID 12477932.

Images



Antibody Reactive Against Recombinant Protein. Western Blot detection against Immunogen (68.53 KDa) .



Detection limit for recombinant GST tagged KCTD9 is approximately 0.3ng/ml as a capture antibody.

Please note: All products are 'FOR RESEARCH USE ONLY. NOT FOR USE IN DIAGNOSTIC OR THERAPEUTIC PROCEDURES'.