

# ILF2 Antibody (monoclonal) (M01)

Mouse monoclonal antibody raised against a partial recombinant ILF2.

Catalog # AT2527a

## Product Information

---

<b>Application</b>	WB, E
<b>Primary Accession</b>	<a href="#">Q12905</a>
<b>Other Accession</b>	<a href="#">NM_004515</a>
<b>Reactivity</b>	Human
<b>Host</b>	mouse
<b>Clonality</b>	monoclonal
<b>Isotype</b>	IgG1 Kappa
<b>Clone Names</b>	1E3
<b>Calculated MW</b>	43062

## Additional Information

---

<b>Gene ID</b>	3608
<b>Other Names</b>	Interleukin enhancer-binding factor 2, Nuclear factor of activated T-cells 45 kDa, ILF2, NF45
<b>Target/Specificity</b>	ILF2 (NP_004506, 151 a.a. ~ 250 a.a) partial recombinant protein with GST tag. MW of the GST tag alone is 26 KDa.
<b>Dilution</b>	WB~~1:500~1000 E~~N/A
<b>Format</b>	Clear, colorless solution in phosphate buffered saline, pH 7.2 .
<b>Storage</b>	Store at -20°C or lower. Aliquot to avoid repeated freezing and thawing.
<b>Precautions</b>	ILF2 Antibody (monoclonal) (M01) is for research use only and not for use in diagnostic or therapeutic procedures.

## Background

---

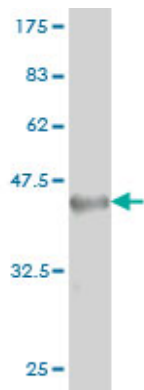
Nuclear factor of activated T-cells (NFAT) is a transcription factor required for T-cell expression of the interleukin 2 gene. NFAT binds to a sequence in the interleukin 2 gene enhancer known as the antigen receptor response element 2. In addition, NFAT can bind RNA and is an essential component for encapsidation and protein priming of hepatitis B viral polymerase. NFAT is a heterodimer of 45 kDa and 90 kDa proteins, the smaller of which is the product of this gene. The encoded protein binds strongly to the 90 kDa protein and stimulates its ability to enhance gene expression.

## References

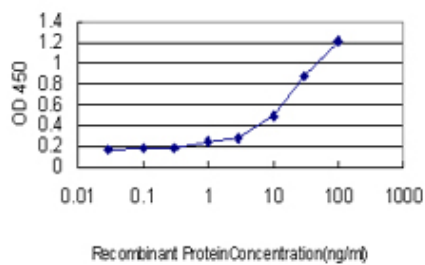
---

1. Dynamic interplay between O-GlcNAcylation and GSK-3-dependent phosphorylation. Wang Z, Pandey A, Hart GW. Mol Cell Proteomics. 2007 Aug;6(8):1365-79. Epub 2007 May 16.

## Images



Antibody Reactive Against Recombinant Protein. Western Blot detection against Immunogen (36.74 KDa) .



Detection limit for recombinant GST tagged ILF2 is approximately 1 ng/ml as a capture antibody.

Please note: All products are 'FOR RESEARCH USE ONLY. NOT FOR USE IN DIAGNOSTIC OR THERAPEUTIC PROCEDURES'.