

## IL1RAPL1 Antibody (monoclonal) (M04)

Mouse monoclonal antibody raised against a partial recombinant IL1RAPL1.

Catalog # AT2512a

### Product Information

---

<b>Application</b>	WB, E
<b>Primary Accession</b>	<a href="#">Q9NZN1</a>
<b>Other Accession</b>	<a href="#">NM_014271</a>
<b>Reactivity</b>	Human
<b>Host</b>	mouse
<b>Clonality</b>	monoclonal
<b>Isotype</b>	IgG2a Kappa
<b>Clone Names</b>	1C10
<b>Calculated MW</b>	79969

### Additional Information

---

<b>Gene ID</b>	11141
<b>Other Names</b>	Interleukin-1 receptor accessory protein-like 1, IL-1-RAPL-1, IL-1RAPL-1, IL1RAPL-1, Oligophrenin-4, Three immunoglobulin domain-containing IL-1 receptor-related 2, TIGIRR-2, X-linked interleukin-1 receptor accessory protein-like 1, IL1RAPL1, OPHN4
<b>Target/Specificity</b>	IL1RAPL1 (NP_055086.1, 151 a.a. ~ 250 a.a) partial recombinant protein with GST tag. MW of the GST tag alone is 26 KDa.
<b>Dilution</b>	WB~~1:500~1000 E~~N/A
<b>Format</b>	Clear, colorless solution in phosphate buffered saline, pH 7.2 .
<b>Storage</b>	Store at -20°C or lower. Aliquot to avoid repeated freezing and thawing.
<b>Precautions</b>	IL1RAPL1 Antibody (monoclonal) (M04) is for research use only and not for use in diagnostic or therapeutic procedures.

### Background

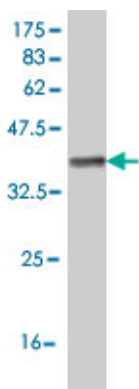
---

The protein encoded by this gene is a member of the interleukin 1 receptor family and is similar to the interleukin 1 accessory proteins. It is most closely related to interleukin 1 receptor accessory protein-like 2 (IL1RAPL2). This gene and IL1RAPL2 are located at a region on chromosome X that is associated with X-linked non-syndromic mental retardation. Deletions and mutations in this gene were found in patients with mental retardation. This gene is expressed at a high level in post-natal brain structures involved in the hippocampal memory system, which suggests a specialized role in the physiological processes underlying memory and learning abilities.

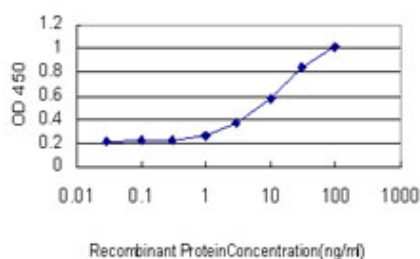
## References

1. Mutations in the calcium-related gene IL1RAPL1 are associated with autism. Piton A, Michaud JL, Peng H, Aradhya S, Gauthier J, Motttron L, Champagne N, Lafreniere RG, Hamdan FF; S2D team, Joober R, Fombonne E, Marineau C, Cossette P, Dube MP, Haghighi P, Drapeau P, Barker PA, Carbonetto S, Rouleau GA. Hum Mol Genet. 2008 Dec 15;17(24):3965-74. Epub 2008 Sep 18.

## Images



Antibody Reactive Against Recombinant Protein. Western Blot detection against Immunogen (36.74 KDa) .



Detection limit for recombinant GST tagged IL1RAPL1 is approximately 0.3ng/ml as a capture antibody.

Please note: All products are 'FOR RESEARCH USE ONLY. NOT FOR USE IN DIAGNOSTIC OR THERAPEUTIC PROCEDURES'.