

IGSF6 Antibody (monoclonal) (M01)

Mouse monoclonal antibody raised against a full length recombinant IGSF6.

Catalog # AT2495a

Product Information

Application	WB, E
Primary Accession	O95976
Other Accession	BC017844
Reactivity	Human
Host	mouse
Clonality	monoclonal
Isotype	IgG1 Kappa
Clone Names	2A12
Calculated MW	27013

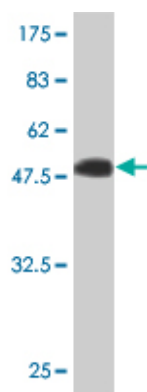
Additional Information

Gene ID	10261
Other Names	Immunoglobulin superfamily member 6, IgSF6, Protein DORA, IGSF6, DORA
Target/Specificity	IGSF6 (AAH17844.1, 29 a.a. ~ 241 a.a) full-length recombinant protein with GST tag. MW of the GST tag alone is 26 KDa.
Dilution	WB~~1:500~1000 E~~N/A
Format	Clear, colorless solution in phosphate buffered saline, pH 7.2 .
Storage	Store at -20°C or lower. Aliquot to avoid repeated freezing and thawing.
Precautions	IGSF6 Antibody (monoclonal) (M01) is for research use only and not for use in diagnostic or therapeutic procedures.

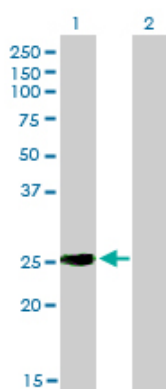
References

Genetic variation in the IGSF6 gene and lack of association with inflammatory bowel disease. King K, et al. Eur J Immunogenet, 2003 Jun. PMID 12786995.Generation and initial analysis of more than 15,000 full-length human and mouse cDNA sequences. Strausberg RL, et al. Proc Natl Acad Sci U S A, 2002 Dec 24. PMID 12477932.The mouse and human IGSF6 (DORA) genes map to the inflammatory bowel disease 1 locus and are embedded in an intron of a gene of unknown function. Bates EE, et al. Immunogenetics, 2000 Nov. PMID 11132146.CD40L activation of dendritic cells down-regulates DORA, a novel member of the immunoglobulin superfamily. Bates EE, et al. Mol Immunol, 1998 Jun. PMID 9809579.Construction and characterization of a full length-enriched and a 5'-end-enriched cDNA library. Suzuki Y, et al. Gene, 1997 Oct 24. PMID 9373149.

Images

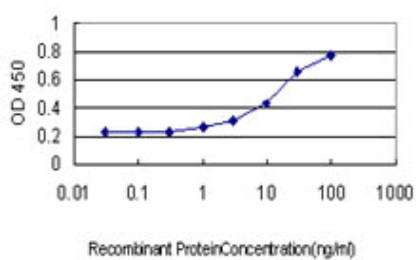


Antibody Reactive Against Recombinant Protein. Western Blot detection against Immunogen (49.17 KDa) .



Western Blot analysis of IGSF6 expression in transfected 293T cell line by IGSF6 monoclonal antibody (M01), clone 2A12.

Lane 1: IGSF6 transfected lysate (27 KDa).
Lane 2: Non-transfected lysate.



Detection limit for recombinant GST tagged IGSF6 is approximately 1 ng/ml as a capture antibody.

Please note: All products are 'FOR RESEARCH USE ONLY. NOT FOR USE IN DIAGNOSTIC OR THERAPEUTIC PROCEDURES'.