

IFNE1 Antibody (monoclonal) (M01)

Mouse monoclonal antibody raised against a partial recombinant IFNE1.

Catalog # AT2489a

Product Information

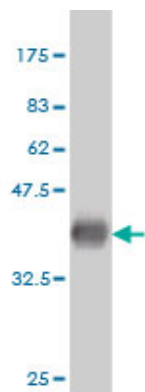
Application	WB, IP, E
Primary Accession	Q86WN2
Other Accession	NM_176891
Reactivity	Human
Host	Mouse
Clonality	monoclonal
Isotype	IgG2a Kappa
Clone Names	3B8
Calculated MW	24414

Additional Information

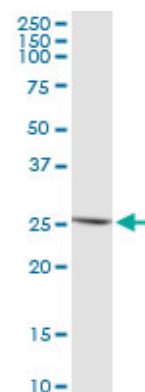
Gene ID	338376
Other Names	Interferon epsilon, IFN-epsilon, Interferon epsilon-1, IFNE, IFNE1
Target/Specificity	IFNE1 (NP_795372, 109 a.a. ~ 208 a.a) partial recombinant protein with GST tag. MW of the GST tag alone is 26 KDa.
Dilution	WB~~1:500~1000 IP~~N/A E~~N/A
Format	Clear, colorless solution in phosphate buffered saline, pH 7.2 .
Storage	Store at -20°C or lower. Aliquot to avoid repeated freezing and thawing.
Precautions	IFNE1 Antibody (monoclonal) (M01) is for research use only and not for use in diagnostic or therapeutic procedures.

References

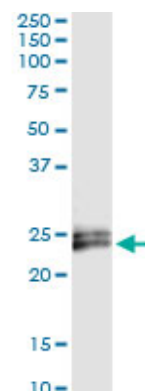
Bivariate genetic association of KIAA1797 with heart rate in American Indians: the Strong Heart Family Study. Melton PE, et al. Hum Mol Genet, 2010 Sep 15. PMID 20601674. Dengue hemorrhagic fever is associated with polymorphisms in JAK1. Silva LK, et al. Eur J Hum Genet, 2010 Jun 30. PMID 20588308. Associations of 9p21 variants with cutaneous malignant melanoma, nevi, and pigmentation phenotypes in melanoma-prone families with and without CDKN2A mutations. Yang XR, et al. Fam Cancer, 2010 Jun 24. PMID 20574843. [Anti-HIV effects of IFN-tau in human macrophages: role of cellular antiviral factors and interleukin-6] Maneglier B, et al. Pathol Biol (Paris), 2008 Nov-Dec. PMID 18842358. Repeated replication and a prospective meta-analysis of the association between chromosome 9p21.3 and coronary artery disease. Schunkert H, et al. Circulation, 2008 Apr 1. PMID 18362232.



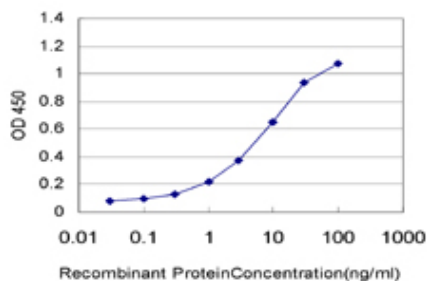
Antibody Reactive Against Recombinant Protein.Western Blot detection against Immunogen (36.74 KDa) .



IFNE1 monoclonal antibody (M01), clone 3B8. Western Blot analysis of IFNE expression in human spleen.



Immunoprecipitation of IFNE transfected lysate using anti-IFNE monoclonal antibody and Protein A Magnetic Bead ([U0007](#)), and immunoblotted with IFNE MaxPab rabbit polyclonal antibody.



Detection limit for recombinant GST tagged IFNE1 is approximately 0.3ng/ml as a capture antibody.

Please note: All products are 'FOR RESEARCH USE ONLY. NOT FOR USE IN DIAGNOSTIC OR THERAPEUTIC PROCEDURES'.