

GPR3 Antibody (monoclonal) (M01)

Mouse monoclonal antibody raised against a full length recombinant GPR3.

Catalog # AT2248a

Product Information

Application	WB, IHC, E
Primary Accession	P46089
Other Accession	BC032702
Reactivity	Human
Host	mouse
Clonality	monoclonal
Isotype	IgG2a kappa
Clone Names	3B4-G3
Calculated MW	35010

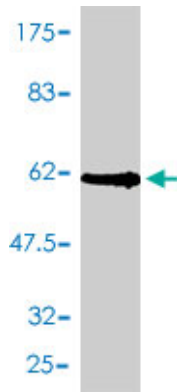
Additional Information

Gene ID	2827
Other Names	G-protein coupled receptor 3, ACCA orphan receptor, GPR3, ACCA
Target/Specificity	GPR3 (AAH32702, 1 a.a. ~ 330 a.a) full-length recombinant protein with GST tag. MW of the GST tag alone is 26 KDa.
Dilution	WB~~1:500~1000 IHC~~1:100~500 E~~N/A
Format	Clear, colorless solution in phosphate buffered saline, pH 7.2 .
Storage	Store at -20°C or lower. Aliquot to avoid repeated freezing and thawing.
Precautions	GPR3 Antibody (monoclonal) (M01) is for research use only and not for use in diagnostic or therapeutic procedures.

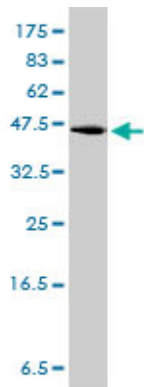
References

GPR3 may not be a potential candidate gene for premature ovarian failure. Zhou S, et al. Reprod Biomed Online, 2010 Jan. PMID 20158988.Oocyte-specific G-protein-coupled receptor 3 (GPR3): no perturbations found in 82 women with premature ovarian failure (first report). Kovanci E, et al. Fertil Steril, 2008 Oct. PMID 17953967.The DNA sequence and biological annotation of human chromosome 1. Gregory SG, et al. Nature, 2006 May 18. PMID 16710414.The status, quality, and expansion of the NIH full-length cDNA project: the Mammalian Gene Collection (MGC). Gerhard DS, et al. Genome Res, 2004 Oct. PMID 15489334.Fluid shear stress differentially regulates gpr3, gpr6, and gpr12 expression in human umbilical vein endothelial cells. Uhlenbrock K, et al. Cell Physiol Biochem, 2003. PMID 12649592.

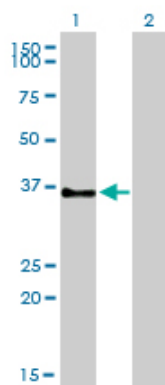
Images



Antibody Reactive Against Recombinant Protein. Western Blot detection against Immunogen (62.04 KDa) .

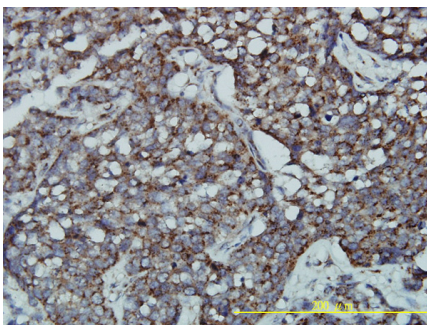


GPR3 monoclonal antibody (M01), clone 3B4-G3 Western Blot analysis of GPR3 expression in Jurkat (Cat # AT2248a)

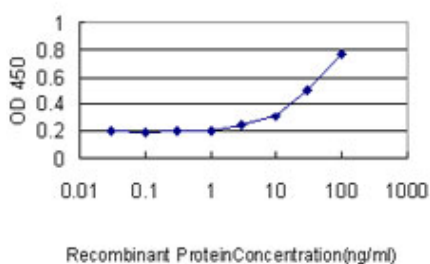


Western Blot analysis of GPR3 expression in transfected 293T cell line by GPR3 monoclonal antibody (M01), clone 3B4-G3.

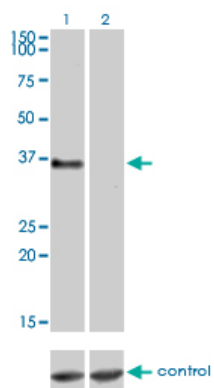
Lane 1: GPR3 transfected lysate(35 KDa).
Lane 2: Non-transfected lysate.



Immunoperoxidase of monoclonal antibody to GPR3 on formalin-fixed paraffin-embedded human transitional cell carcinoma tissue. [antibody concentration 1 ug/ml]



Detection limit for recombinant GST tagged GPR3 is approximately 0.03ng/ml as a capture antibody.



Western blot analysis of GPR3 over-expressed 293 cell line, cotransfected with GPR3 Validated Chimera RNAi (Cat # AT2248a)

Please note: All products are 'FOR RESEARCH USE ONLY. NOT FOR USE IN DIAGNOSTIC OR THERAPEUTIC PROCEDURES'.