

GOLM1 Antibody (monoclonal) (M06)

Mouse monoclonal antibody raised against a partial recombinant GOLM1.

Catalog # AT2239a

Product Information

Application	WB, IHC, IF, E
Primary Accession	Q8NBJ4
Other Accession	NM_016548
Reactivity	Human
Host	mouse
Clonality	monoclonal
Isotype	IgG1 Kappa
Clone Names	5B10
Calculated MW	45333

Additional Information

Gene ID	51280
Other Names	Golgi membrane protein 1, Golgi membrane protein GP73, Golgi phosphoprotein 2, GOLM1, C9orf155, GOLPH2
Target/Specificity	GOLM1 (NP_057632, 302 a.a. ~ 401 a.a) partial recombinant protein with GST tag. MW of the GST tag alone is 26 KDa.
Dilution	WB~~1:1000 IHC~~1:100 IF~~1:50 E~~N/A
Format	Clear, colorless solution in phosphate buffered saline, pH 7.2 .
Storage	Store at -20°C or lower. Aliquot to avoid repeated freezing and thawing.
Precautions	GOLM1 Antibody (monoclonal) (M06) is for research use only and not for use in diagnostic or therapeutic procedures.

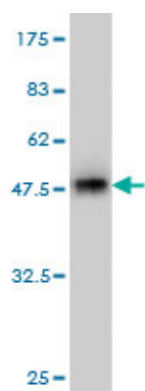
Background

The Golgi complex plays a key role in the sorting and modification of proteins exported from the endoplasmic reticulum. The protein encoded by this gene is a type II Golgi transmembrane protein. It processes proteins synthesized in the rough endoplasmic reticulum and assists in the transport of protein cargo through the Golgi apparatus. The expression of this gene has been observed to be upregulated in response to viral infection. Alternatively spliced transcript variants encoding the same protein have been described for this gene.

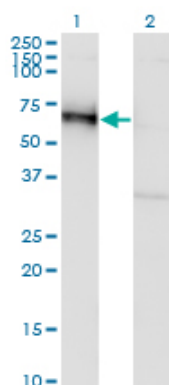
References

1.The HOPE fixation technique - a promising alternative to common prostate cancer biobanking approaches.Braun M, Menon R, Nikolov P, Kirsten R, Petersen K, Schilling D, Schott C, Gundisch S, Fend F, Becker KF, Perner S.BMC Cancer. 2011 Dec 7;11:511.2.ERG rearrangement in small cell prostatic and lung cancer.Scheble VJ, Braun M, Wilbertz T, Stiedl AC, Petersen K, Schilling D, Reischl M, Seitz G, Fend F, Kristiansen G, Perner S.Histopathology. 2010 Jun;56(7):937-43.3.GOLPH2 protein expression as a novel tissue biomarker for prostate cancer: implications for tissue-based diagnostics.Kristiansen G, Fritzsche FR, Wassermann K, Jager C, Tolls A, Lein M, Stephan C, Jung K, Pilarsky C, Dietel M, Moch H.Br J Cancer. 2008 Sep 16;99(6):939-48.4.GOLPH2 and MYO6: putative prostate cancer markers localized to the Golgi apparatus.Wei S, Dunn TA, Isaacs WB, De Marzo AM, Luo J.Prostate. 2008 Sep 15;68(13):1387-95.

Images

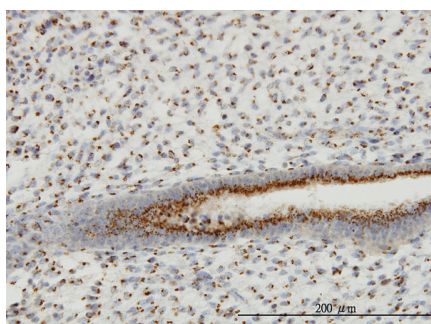


Antibody Reactive Against Recombinant Protein.Western Blot detection against Immunogen (36.74 KDa) .

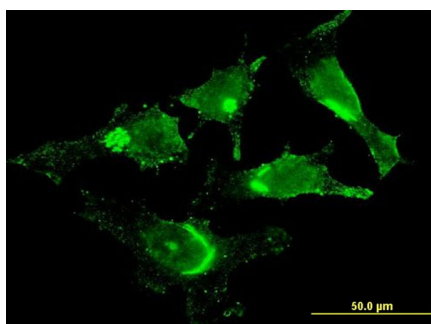


Western Blot analysis of GOLM1 expression in transfected 293T cell line by GOLM1 monoclonal antibody (M06), clone 5B10.

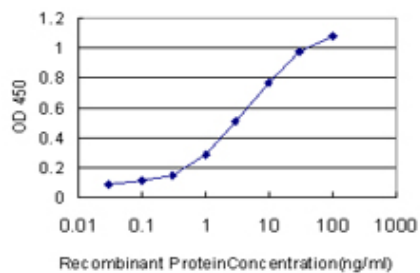
Lane 1: GOLM1 transfected lysate(45.3 KDa).
Lane 2: Non-transfected lysate.



Immunoperoxidase of monoclonal antibody to GOLM1 on formalin-fixed paraffin-embedded human endometrium. [antibody concentration 3 ug/ml]



Immunofluorescence of monoclonal antibody to GOLM1 on HeLa cell . [antibody concentration 10 ug/ml]



Detection limit for recombinant GST tagged GOLM1 is approximately 0.1 ng/ml as a capture antibody.

Citations

- [Gradually increased Golgi protein 73 expression in the progression of benign liver diseases to precancerous lesions and hepatocellular carcinoma correlates with prognosis of patients.](#)

Please note: All products are 'FOR RESEARCH USE ONLY. NOT FOR USE IN DIAGNOSTIC OR THERAPEUTIC PROCEDURES'.