

GLRA1 Antibody (monoclonal) (M01)

Mouse monoclonal antibody raised against a partial recombinant GLRA1.

Catalog # AT2209a

Product Information

Application	WB, E
Primary Accession	P23415
Other Accession	NM_000171
Reactivity	Human
Host	mouse
Clonality	monoclonal
Isotype	IgG2a Kappa
Clone Names	2E7
Calculated MW	52624

Additional Information

Gene ID	2741
Other Names	Glycine receptor subunit alpha-1, Glycine receptor 48 kDa subunit, Glycine receptor strychnine-binding subunit, GLRA1
Target/Specificity	GLRA1 (NP_000162, 121 a.a. ~ 220 a.a) partial recombinant protein with GST tag. MW of the GST tag alone is 26 KDa.
Dilution	WB~~1:500~1000 E~~N/A
Format	Clear, colorless solution in phosphate buffered saline, pH 7.2 .
Storage	Store at -20°C or lower. Aliquot to avoid repeated freezing and thawing.
Precautions	GLRA1 Antibody (monoclonal) (M01) is for research use only and not for use in diagnostic or therapeutic procedures.

Background

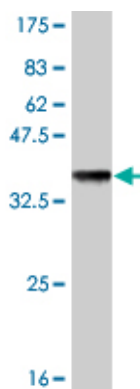
The protein encoded by this gene is a subunit of a pentameric inhibitory glycine receptor. The receptor mediates postsynaptic inhibition in the central nervous system. Defects in this gene are a cause of startle disease (STHE), also known as hereditary hyperekplexia or congenital stiff-person syndrome. Two transcript variants encoding different isoforms have been found for this gene.

References

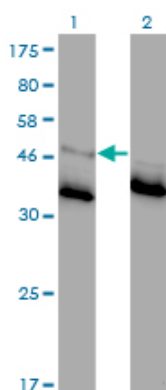
External divalent cations increase anion-cation permeability ratio in glycine receptor channels. Sugiharto S, et al. Pflugers Arch, 2010 Jun. PMID 20198385. Multifunctional basic motif in the glycine receptor intracellular

domain induces subunit-specific sorting. Melzer N, et al. J Biol Chem, 2010 Feb 5. PMID 19959465. Genetical genomic determinants of alcohol consumption in rats and humans. Tabakoff B, et al. BMC Biol, 2009 Oct 27. PMID 19874574. Recessive hyperekplexia mutations of the glycine receptor alpha1 subunit affect cell surface integration and stability. Villmann C, et al. J Neurochem, 2009 Nov. PMID 19732286. Interaction of androsterone and progesterone with inhibitory ligand-gated ion channels: a patch clamp study. Ziegler E, et al. Naunyn Schmiedeberg Arch Pharmacol, 2009 Oct. PMID 19705103.

Images



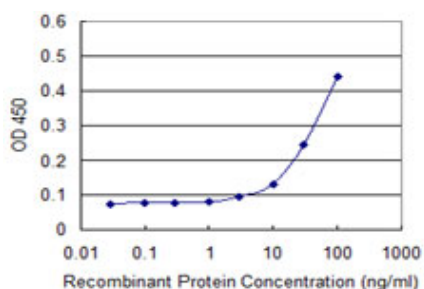
Antibody Reactive Against Recombinant Protein. Western Blot detection against Immunogen (36.74 kDa) .



Western Blot analysis of GLRA1 expression in transfected 293T cell line by GLRA1 monoclonal antibody (M01), clone 2E6.

Lane 1: GLRA1 transfected lysate (51.7 kDa).

Lane 2: Non-transfected lysate.



Detection limit for recombinant GST tagged GLRA1 is approximately 3 ng/ml as a capture antibody.

Please note: All products are 'FOR RESEARCH USE ONLY. NOT FOR USE IN DIAGNOSTIC OR THERAPEUTIC PROCEDURES'.