

GIT2 Antibody (monoclonal) (M01)

Mouse monoclonal antibody raised against a full length recombinant GIT2.

Catalog # AT2201a

Product Information

Application	WB, IHC, IF
Primary Accession	Q14161
Other Accession	BC001379
Reactivity	Human
Host	mouse
Clonality	monoclonal
Isotype	IgG2a Kappa
Clone Names	3B5-B9
Calculated MW	84543

Additional Information

Gene ID	9815
Other Names	ARF GTPase-activating protein GIT2, ARF GAP GIT2, Cool-interacting tyrosine-phosphorylated protein 2, CAT-2, CAT2, G protein-coupled receptor kinase-interactor 2, GRK-interacting protein 2, GIT2, KIAA0148
Target/Specificity	GIT2 (AAH01379, 1 a.a. ~ 471 a.a) full-length recombinant protein with GST tag. MW of the GST tag alone is 26 KDa.
Dilution	WB~~1:500~1000 IHC~~1:100~500 IF~~1:50~200
Format	Clear, colorless solution in phosphate buffered saline, pH 7.2 .
Storage	Store at -20°C or lower. Aliquot to avoid repeated freezing and thawing.
Precautions	GIT2 Antibody (monoclonal) (M01) is for research use only and not for use in diagnostic or therapeutic procedures.

Background

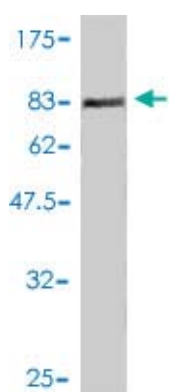
This gene encodes a member of the GIT protein family, which interact with G protein-coupled receptor kinases and possess ADP-ribosylation factor (ARF) GTPase-activating protein (GAP) activity. GIT proteins traffic between cytoplasmic complexes, focal adhesions, and the cell periphery, and interact with Pak interacting exchange factor beta (PIX) to form large oligomeric complexes that transiently recruit other proteins. GIT proteins regulate cytoskeletal dynamics and participate in receptor internalization and membrane trafficking. This gene has been shown to repress lamellipodial extension and focal adhesion turnover, and is thought to regulate cell motility. This gene undergoes extensive alternative splicing to generate multiple isoforms, but the full-length nature of some of these variants has not been determined. The various isoforms have functional differences, with respect to ARF GAP activity and to G protein-coupled

receptor kinase 2 binding.

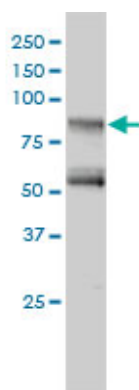
References

Distinct class of putative non-conserved promoters in humans: comparative studies of alternative promoters of human and mouse genes. Tsuritani K, et al. *Genome Res*, 2007 Jul. PMID 17567985. Large-scale mapping of human protein-protein interactions by mass spectrometry. Ewing RM, et al. *Mol Syst Biol*, 2007. PMID 17353931. Global, in vivo, and site-specific phosphorylation dynamics in signaling networks. Olsen JV, et al. *Cell*, 2006 Nov 3. PMID 17081983. GIT2 represses Crk- and Rac1-regulated cell spreading and Cdc42-mediated focal adhesion turnover. Frank SR, et al. *EMBO J*, 2006 May 3. PMID 16628223. The multifunctional GIT family of proteins. Hoefen RJ, et al. *J Cell Sci*, 2006 Apr 15. PMID 16598076.

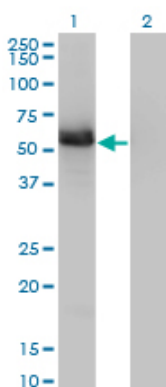
Images



Antibody Reactive Against Recombinant Protein. Western Blot detection against Immunogen (77.33 KDa) .



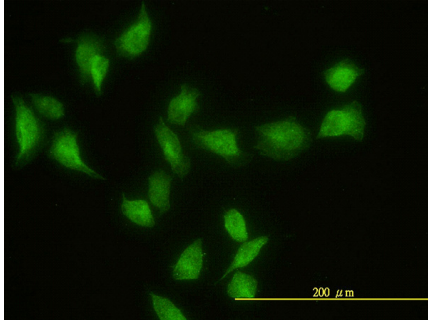
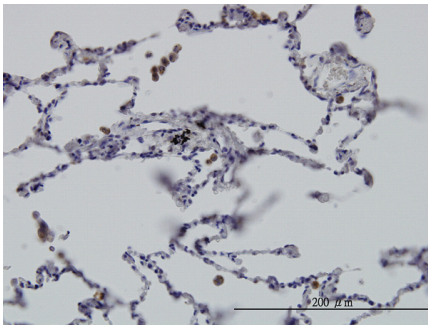
GIT2 monoclonal antibody (M01), clone 3B5-B9 Western Blot analysis of GIT2 expression in Jurkat ((Cat # AT2201a)



Western Blot analysis of GIT2 expression in transfected 293T cell line by GIT2 monoclonal antibody (M01), clone 3B5-B9.

Lane 1: GIT2 transfected lysate(52.6 KDa).
Lane 2: Non-transfected lysate.

Immunoperoxidase of monoclonal antibody to GIT2 on formalin-fixed paraffin-embedded human lung. [antibody concentration 3 ug/ml]



Immunofluorescence of monoclonal antibody to GIT2 on HeLa cell. [antibody concentration 20 ug/ml]

Citations

- [The PAK system links Rho GTPase signaling to thrombin-mediated platelet activation.](#)

Please note: All products are 'FOR RESEARCH USE ONLY. NOT FOR USE IN DIAGNOSTIC OR THERAPEUTIC PROCEDURES'.