

GCA Antibody (monoclonal) (M01)

Mouse monoclonal antibody raised against a full-length recombinant GCA.

Catalog # AT2171a

Product Information

Application	WB, IF, E
Primary Accession	P28676
Other Accession	BC005214
Reactivity	Human
Host	mouse
Clonality	monoclonal
Isotype	IgG2a Kappa
Clone Names	2F5
Calculated MW	24010

Additional Information

Gene ID	25801
Other Names	Grancalcin, GCA, GCL
Target/Specificity	GCA (AAH05214, 1 a.a. ~ 217 a.a) full-length recombinant protein with GST tag. MW of the GST tag alone is 26 KDa.
Dilution	WB~~1:500~1000 IF~~1:50~200 E~~N/A
Format	Clear, colorless solution in phosphate buffered saline, pH 7.2 .
Storage	Store at -20°C or lower. Aliquot to avoid repeated freezing and thawing.
Precautions	GCA Antibody (monoclonal) (M01) is for research use only and not for use in diagnostic or therapeutic procedures.

Background

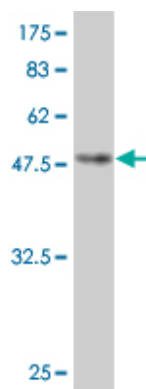
This gene product, grancalcin, is a calcium-binding protein abundant in neutrophils and macrophages. It belongs to the penta-EF-hand subfamily of proteins which includes sorcin, calpain, and ALG-2. Grancalcin localization is dependent upon calcium and magnesium. In the absence of divalent cation, grancalcin localizes to the cytosolic fraction; with magnesium alone, it partitions with the granule fraction; and in the presence of magnesium and calcium, it associates with both the granule and membrane fractions, suggesting a role for grancalcin in granule-membrane fusion and degranulation.

References

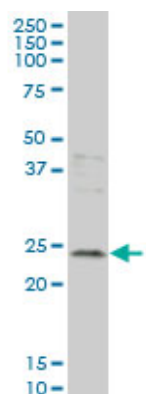
New genetic associations detected in a host response study to hepatitis B vaccine. Davila S, et al. Genes

Immun, 2010 Apr. PMID 20237496. IFIH1-GCA-KCNH7 locus is not associated with genetic susceptibility to multiple sclerosis in French patients. Couturier N, et al. Eur J Hum Genet, 2009 Jun. PMID 19156166. IFIH1-GCA-KCNH7 locus: influence on multiple sclerosis risk. Martnez A, et al. Eur J Hum Genet, 2008 Jul. PMID 18285833. The association between the IFIH1 locus and type 1 diabetes. Qu HQ, et al. Diabetologia, 2008 Mar. PMID 18071670. A protein-protein interaction network for human inherited ataxias and disorders of Purkinje cell degeneration. Lim J, et al. Cell, 2006 May 19. PMID 16713569.

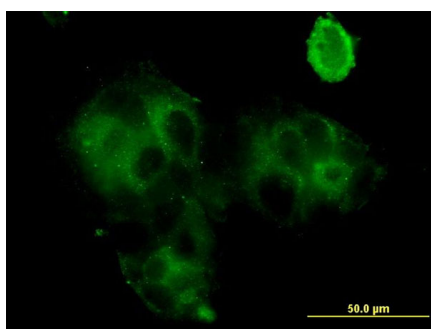
Images



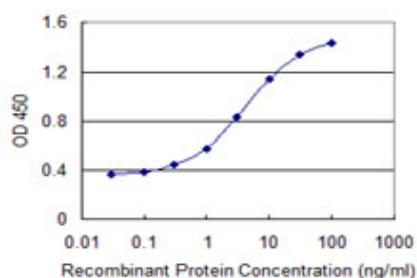
Antibody Reactive Against Recombinant Protein. Western Blot detection against Immunogen (49.61 KDa) .



GCA monoclonal antibody (M01), clone 2F5 Western Blot analysis of GCA expression in MCF-7 (Cat # AT2171a)



Immunofluorescence of monoclonal antibody to GCA on MCF-7 cell . [antibody concentration 10 ug/ml]



Detection limit for recombinant GST tagged GCA is 0.03 ng/ml as a capture antibody.

Please note: All products are 'FOR RESEARCH USE ONLY. NOT FOR USE IN DIAGNOSTIC OR THERAPEUTIC PROCEDURES'.