

GATAD2A Antibody (monoclonal) (M01)

Mouse monoclonal antibody raised against a partial recombinant GATAD2A.

Catalog # AT2164a

Product Information

Application	WB
Primary Accession	Q86YP4
Other Accession	NM_017660
Reactivity	Human
Host	mouse
Clonality	monoclonal
Isotype	IgG2a Kappa
Clone Names	3F3
Calculated MW	68063

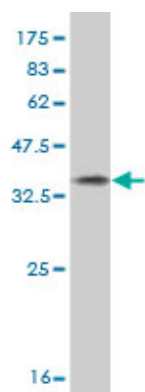
Additional Information

Gene ID	54815
Other Names	Transcriptional repressor p66-alpha, Hp66alpha, GATA zinc finger domain-containing protein 2A, GATAD2A
Target/Specificity	GATAD2A (NP_060130, 26 a.a. ~ 134 a.a) partial recombinant protein with GST tag. MW of the GST tag alone is 26 KDa.
Dilution	WB~~1:500~1000
Format	Clear, colorless solution in phosphate buffered saline, pH 7.2 .
Storage	Store at -20°C or lower. Aliquot to avoid repeated freezing and thawing.
Precautions	GATAD2A Antibody (monoclonal) (M01) is for research use only and not for use in diagnostic or therapeutic procedures.

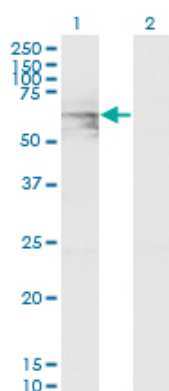
References

Human variation in alcohol response is influenced by variation in neuronal signaling genes. Joslyn G, et al. Alcohol Clin Exp Res, 2010 May. PMID 20201926. Toward a confocal subcellular atlas of the human proteome. Barbe L, et al. Mol Cell Proteomics, 2008 Mar. PMID 18029348. A probability-based approach for high-throughput protein phosphorylation analysis and site localization. Beausoleil SA, et al. Nat Biotechnol, 2006 Oct. PMID 16964243. p66alpha and p66beta of the Mi-2/NuRD complex mediate MBD2 and histone interaction. Brackertz M, et al. Nucleic Acids Res, 2006. PMID 16415179. Diversification of transcriptional modulation: large-scale identification and characterization of putative alternative promoters of human genes. Kimura K, et al. Genome Res, 2006 Jan. PMID 16344560.

Images



Antibody Reactive Against Recombinant Protein. Western Blot detection against Immunogen (37.73 KDa) .



Western Blot analysis of GATAD2A expression in transfected 293T cell line by GATAD2A monoclonal antibody (M01), clone 3F3.

Lane 1: GATAD2A transfected lysate (Predicted MW: 52.5 KDa).

Lane 2: Non-transfected lysate.

Please note: All products are 'FOR RESEARCH USE ONLY. NOT FOR USE IN DIAGNOSTIC OR THERAPEUTIC PROCEDURES'.