

FRG1 Antibody (monoclonal) (M01)

Mouse monoclonal antibody raised against a full length recombinant FRG1.

Catalog # AT2107a

Product Information

Application	WB, IF, IP
Primary Accession	Q14331
Other Accession	BC053997
Reactivity	Human
Host	mouse
Clonality	monoclonal
Isotype	IgG2a Kappa
Clone Names	4A5
Calculated MW	29172

Additional Information

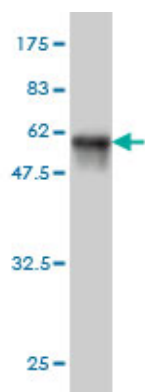
Gene ID	2483
Other Names	Protein FRG1, FSHD region gene 1 protein, FRG1
Target/Specificity	FRG1 (AAH53997, 1 a.a. ~ 258 a.a) full-length recombinant protein with GST tag. MW of the GST tag alone is 26 KDa.
Dilution	WB~~1:500~1000 IF~~1:50~200 IP~~N/A
Format	Clear, colorless solution in phosphate buffered saline, pH 7.2 .
Storage	Store at -20°C or lower. Aliquot to avoid repeated freezing and thawing.
Precautions	FRG1 Antibody (monoclonal) (M01) is for research use only and not for use in diagnostic or therapeutic procedures.

Background

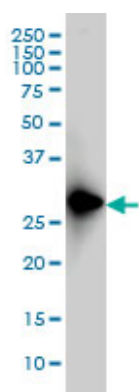
This gene maps to a location 100 kb centromeric of the repeat units on chromosome 4q35 which are deleted in facioscapulohumeral muscular dystrophy (FSHD). It is evolutionarily conserved and has related sequences on multiple human chromosomes but DNA sequence analysis did not reveal any homology to known genes. In vivo studies demonstrate the encoded protein is localized to the nucleolus.

References

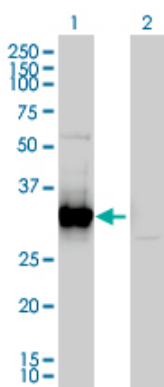
1.RNA Interference Improves Myopathic Phenotypes in Mice Over-expressing FSHD Region Gene 1 (FRG1).Wallace LM, Garwick-Coppens SE, Tupler R, Harper SQ.Mol Ther. 2011 Jul 5. doi: 10.1038/mt.2011.118. [Epub ahead of print]



Antibody Reactive Against Recombinant Protein. Western Blot detection against Immunogen (54.12 KDa) .

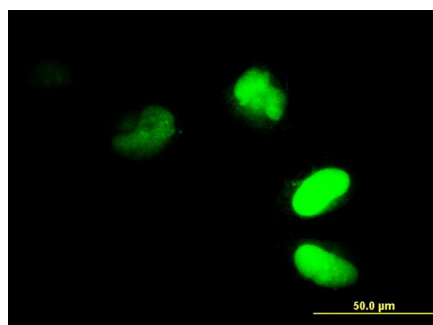


FRG1 monoclonal antibody (M01), clone 4A5 Western Blot analysis of FRG1 expression in HeLa S3 NE (Cat # AT2107a)



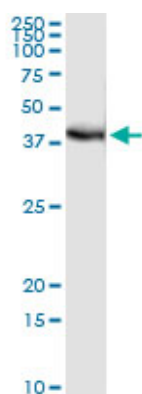
Western Blot analysis of FRG1 expression in transfected 293T cell line by FRG1 monoclonal antibody (M01), clone 4A5.

Lane 1: FRG1 transfected lysate(29 KDa).
Lane 2: Non-transfected lysate.



Immunofluorescence of monoclonal antibody to FRG1 on HeLa cell. [antibody concentration 35 ug/ml]

Immunoprecipitation of FRG1 transfected lysate using anti-FRG1 monoclonal antibody and Protein A Magnetic Bead ([U0007](#)), and immunoblotted with FRG1 MaxPab rabbit polyclonal antibody.



Please note: All products are 'FOR RESEARCH USE ONLY. NOT FOR USE IN DIAGNOSTIC OR THERAPEUTIC PROCEDURES'.