

FLJ10986 Antibody (monoclonal) (M04)

Mouse monoclonal antibody raised against a partial recombinant FLJ10986.

Catalog # AT2063a

Product Information

Application	WB, E
Primary Accession	Q96C11
Other Accession	NM_018291
Reactivity	Human
Host	mouse
Clonality	monoclonal
Isotype	IgG2b Kappa
Clone Names	3B9
Calculated MW	59993

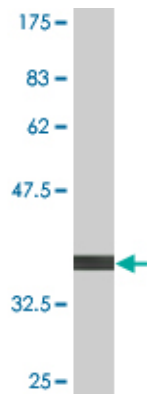
Additional Information

Gene ID	55277
Other Names	FGGY carbohydrate kinase domain-containing protein, 271-, FGGY
Target/Specificity	FLJ10986 (NP_060761, 1 a.a. ~ 99 a.a) partial recombinant protein with GST tag. MW of the GST tag alone is 26 KDa.
Dilution	WB~~1:500~1000 E~~N/A
Format	Clear, colorless solution in phosphate buffered saline, pH 7.2 .
Storage	Store at -20°C or lower. Aliquot to avoid repeated freezing and thawing.
Precautions	FLJ10986 Antibody (monoclonal) (M04) is for research use only and not for use in diagnostic or therapeutic procedures.

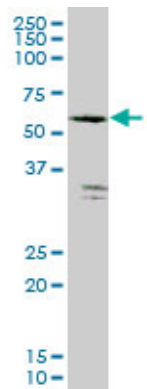
References

Personalized smoking cessation: interactions between nicotine dose, dependence and quit-success genotype score. Rose JE, et al. Mol Med, 2010 Jul-Aug. PMID 20379614. Analysis of DPP6 and FGGY as candidate genes for amyotrophic lateral sclerosis. Daoud H, et al. Amyotroph Lateral Scler, 2010 Aug. PMID 20001489. Analysis of FGGY as a risk factor for sporadic amyotrophic lateral sclerosis. Van Es MA, et al. Amyotroph Lateral Scler, 2009 Oct-Dec. PMID 19922138. Clinical and genetic features of patients with sporadic amyotrophic lateral sclerosis in south-west China. Fang DF, et al. Amyotroph Lateral Scler, 2009 Oct-Dec. PMID 19922123. Genomewide association study of movement-related adverse antipsychotic effects. Aberg K, et al. Biol Psychiatry, 2010 Feb 1. PMID 19875103.

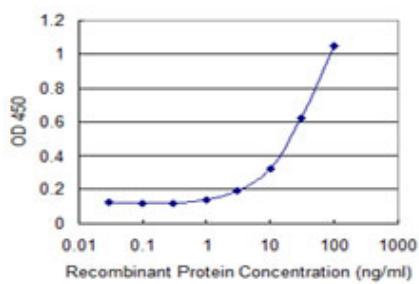
Images



Antibody Reactive Against Recombinant Protein. Western Blot detection against Immunogen (36.63 KDa) .



monoclonal antibody (M04), clone 3B9. Western Blot analysis of expression in HeLa (Cat # AT2063a)



Detection limit for recombinant GST tagged FGGY is 1 ng/ml as a capture antibody.

Please note: All products are 'FOR RESEARCH USE ONLY. NOT FOR USE IN DIAGNOSTIC OR THERAPEUTIC PROCEDURES'.