

## FKBP1B Antibody (monoclonal) (M01)

Mouse monoclonal antibody raised against a full length recombinant FKBP1B.

Catalog # AT2056a

### Product Information

---

<b>Application</b>	WB
<b>Primary Accession</b>	<a href="#">P68106</a>
<b>Other Accession</b>	<a href="#">BC002614</a>
<b>Reactivity</b>	Human
<b>Host</b>	mouse
<b>Clonality</b>	monoclonal
<b>Isotype</b>	IgG1 kappa
<b>Clone Names</b>	4H5-1B6
<b>Calculated MW</b>	11783

### Additional Information

---

<b>Gene ID</b>	2281
<b>Other Names</b>	Peptidyl-prolyl cis-trans isomerase FKBP1B, PPIase FKBP1B, 126 kDa FK506-binding protein, 126 kDa FKBP, FKBP-126, FK506-binding protein 1B, FKBP-1B, Immunophilin FKBP126, Rotamase, h-FKBP-12, FKBP1B, FKBP126, FKBP1L, FKBP9, OTK4
<b>Target/Specificity</b>	FKBP1B (AAH02614, 1 a.a. ~ 80 a.a) full-length recombinant protein with GST tag. MW of the GST tag alone is 26 KDa.
<b>Dilution</b>	WB~~1:500~1000
<b>Format</b>	Clear, colorless solution in phosphate buffered saline, pH 7.2 .
<b>Storage</b>	Store at -20°C or lower. Aliquot to avoid repeated freezing and thawing.
<b>Precautions</b>	FKBP1B Antibody (monoclonal) (M01) is for research use only and not for use in diagnostic or therapeutic procedures.

### Background

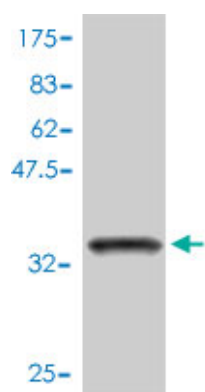
---

The protein encoded by this gene is a member of the immunophilin protein family, which play a role in immunoregulation and basic cellular processes involving protein folding and trafficking. This encoded protein is a cis-trans prolyl isomerase that binds the immunosuppressants FK506 and rapamycin. It is highly similar to the FK506-binding protein 1A. Its physiological role is thought to be in excitation-contraction coupling in cardiac muscle. There are two alternatively spliced transcript variants of this gene encoding different isoforms.

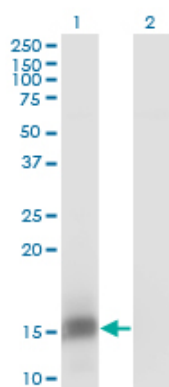
## References

Kinetics of FKBP12.6 binding to ryanodine receptors in permeabilized cardiac myocytes and effects on Ca sparks. Guo T, et al. *Circ Res*, 2010 Jun 11. PMID 20431056. Mapping the ryanodine receptor FK506-binding protein subunit using fluorescence resonance energy transfer. Cornea RL, et al. *J Biol Chem*, 2010 Jun 18. PMID 20404344. FKBP12.6 binding of ryanodine receptors carrying mutations associated with arrhythmogenic cardiac disease. Zissimopoulos S, et al. *Biochem J*, 2009 Apr 15. PMID 19226252. Genome-wide association studies in an isolated founder population from the Pacific Island of Kosrae. Lowe JK, et al. *PLoS Genet*, 2009 Feb. PMID 19197348. Removal of FKBP12.6 does not alter the conductance and activation of the cardiac ryanodine receptor or the susceptibility to stress-induced ventricular arrhythmias. Xiao J, et al. *J Biol Chem*, 2007 Nov 30. PMID 17921453.

## Images



Antibody Reactive Against Recombinant Protein. Western Blot detection against Immunogen (34.54 KDa) .



Western Blot analysis of FKBP1B expression in transfected 293T cell line by FKBP1B monoclonal antibody (M01), clone 4H5-1B6.

Lane 1: FKBP1B transfected lysate (11.8 KDa).  
Lane 2: Non-transfected lysate.

Please note: All products are 'FOR RESEARCH USE ONLY. NOT FOR USE IN DIAGNOSTIC OR THERAPEUTIC PROCEDURES'.