

## EMP3 Antibody (monoclonal) (M01)

Mouse monoclonal antibody raised against a full length recombinant EMP3.

Catalog # AT1903a

### Product Information

---

<b>Application</b>	WB, IHC
<b>Primary Accession</b>	<a href="#">P54852</a>
<b>Other Accession</b>	<a href="#">BC009718</a>
<b>Reactivity</b>	Human
<b>Host</b>	mouse
<b>Clonality</b>	monoclonal
<b>Isotype</b>	IgG1 Kappa
<b>Clone Names</b>	3D4
<b>Calculated MW</b>	18429

### Additional Information

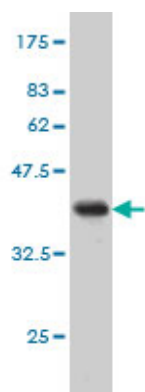
---

<b>Gene ID</b>	2014
<b>Other Names</b>	Epithelial membrane protein 3, EMP-3, Hematopoietic neural membrane protein 1, HNMP-1, Protein YMP, EMP3, YMP
<b>Target/Specificity</b>	EMP3 (AAH09718, 1 a.a. ~ 163 a.a) full-length recombinant protein with GST tag. MW of the GST tag alone is 26 KDa.
<b>Dilution</b>	WB~~1:500~1000 IHC~~1:100~500
<b>Format</b>	Clear, colorless solution in phosphate buffered saline, pH 7.2 .
<b>Storage</b>	Store at -20°C or lower. Aliquot to avoid repeated freezing and thawing.
<b>Precautions</b>	EMP3 Antibody (monoclonal) (M01) is for research use only and not for use in diagnostic or therapeutic procedures.

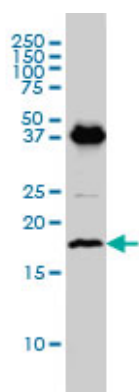
### References

---

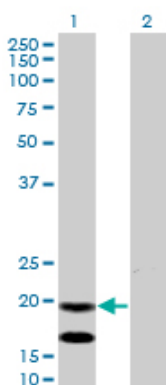
EMP3 overexpression in primary breast carcinomas is not associated with epigenetic aberrations. Zhou W, et al. J Korean Med Sci, 2009 Feb. PMID 19270820.EMP3 as a tumor suppressor gene for esophageal squamous cell carcinoma. Fumoto S, et al. Cancer Lett, 2009 Feb 8. PMID 18823699.DNA hypermethylation and aberrant expression of the EMP3 gene at 19q13.3 in Human Gliomas. Kunitz A, et al. Brain Pathol, 2007 Oct. PMID 17610521.EMP3 overexpression is associated with oligodendroglial tumors retaining chromosome arms 1p and 19q. Li KK, et al. Int J Cancer, 2007 Feb 15. PMID 17187361.Altered expression of CLC, DSG3, EMP3, S100A2, and SLPI in corneal epithelium from keratoconus patients. Nielsen K, et al. Cornea, 2005 Aug. PMID 16015083.



Antibody Reactive Against Recombinant Protein. Western Blot detection against Immunogen (43.67 KDa) .

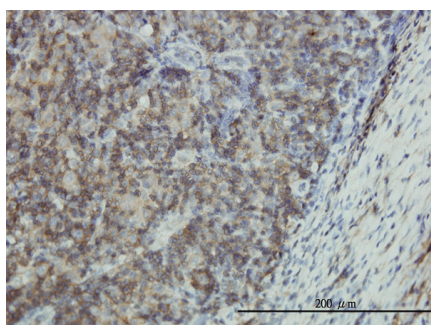


EMP3 monoclonal antibody (M01), clone 3D4 Western Blot analysis of EMP3 expression in C32 ( (Cat # AT1903a )



Western Blot analysis of EMP3 expression in transfected 293T cell line by EMP3 monoclonal antibody (M01), clone 3D4.

Lane 1: EMP3 transfected lysate(18.429 KDa).  
Lane 2: Non-transfected lysate.



Immunoperoxidase of monoclonal antibody to EMP3 on formalin-fixed paraffin-embedded human lymphoma tissue. [antibody concentration 3 ug/ml]

Please note: All products are 'FOR RESEARCH USE ONLY. NOT FOR USE IN DIAGNOSTIC OR THERAPEUTIC PROCEDURES'.