

EIF2S1 Antibody (monoclonal) (M01)

Mouse monoclonal antibody raised against a full length recombinant EIF2S1.

Catalog # AT1875a

Product Information

Application	WB, IF, E
Primary Accession	P05198
Other Accession	BC002513
Reactivity	Human
Host	mouse
Clonality	monoclonal
Isotype	IgG1 kappa
Clone Names	3H12-C11
Calculated MW	36112

Additional Information

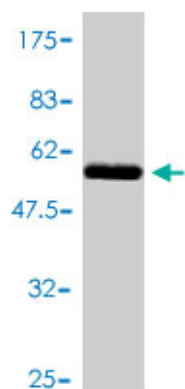
Gene ID	1965
Other Names	Eukaryotic translation initiation factor 2 subunit 1, Eukaryotic translation initiation factor 2 subunit alpha, eIF-2-alpha, eIF-2A, eIF-2alpha, EIF2S1, EIF2A
Target/Specificity	EIF2S1 (AAH02513.1, 1 a.a. ~ 315 a.a) full-length recombinant protein with GST tag. MW of the GST tag alone is 26 KDa.
Dilution	WB~~1:500~1000 IF~~1:50~200 E~~N/A
Format	Clear, colorless solution in phosphate buffered saline, pH 7.2 .
Storage	Store at -20°C or lower. Aliquot to avoid repeated freezing and thawing.
Precautions	EIF2S1 Antibody (monoclonal) (M01) is for research use only and not for use in diagnostic or therapeutic procedures.

Background

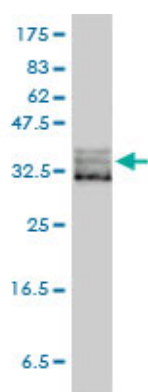
The translation initiation factor EIF2 catalyzes the first regulated step of protein synthesis initiation, promoting the binding of the initiator tRNA to 40S ribosomal subunits. Binding occurs as a ternary complex of methionyl-tRNA, EIF2, and GTP. EIF2 is composed of 3 nonidentical subunits, the 36-kD EIF2-alpha subunit (EIF2S1), the 38-kD EIF2-beta subunit (EIF2S2; MIM 603908), and the 52-kD EIF2-gamma subunit (EIF2S3; MIM 300161). The rate of formation of the ternary complex is modulated by the phosphorylation state of EIF2-alpha (Ernst et al., 1987 [PubMed 2948954]).

References

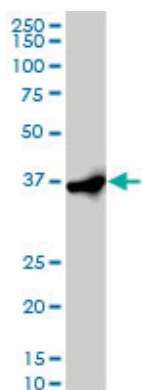
Images



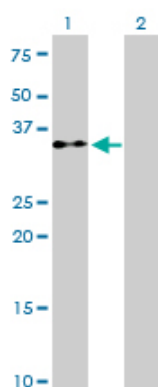
Antibody Reactive Against Recombinant Protein.Western Blot detection against Immunogen (60.39 KDa) .



EIF2S1 monoclonal antibody (M01), clone 3H12-C11
Western Blot analysis of EIF2S1 expression in HeLa (Cat # AT1875a)



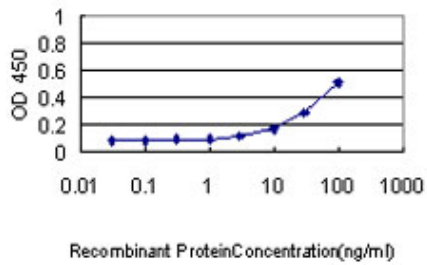
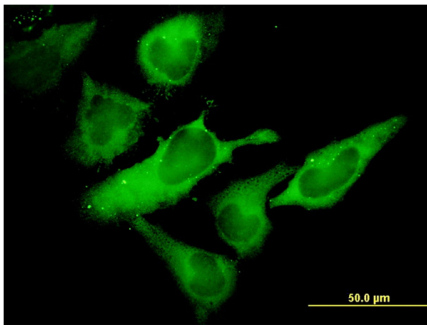
EIF2S1 monoclonal antibody (M01), clone 3H12-C11.
Western Blot analysis of EIF2S1 expression in Hela S3 NE (Cat # AT1875a)



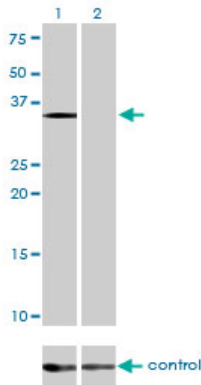
Western Blot analysis of EIF2S1 expression in transfected 293T cell line by EIF2S1 monoclonal antibody (M01), clone 3H12-C11.

Lane 1: EIF2S1 transfected lysate(36.1 KDa).
Lane 2: Non-transfected lysate.

Immunofluorescence of monoclonal antibody to EIF2S1 on HeLa cell. [antibody concentration 10 ug/ml]



Detection limit for recombinant GST tagged EIF2S1 is approximately 0.3ng/ml as a capture antibody.



Western blot analysis of EIF2S1 over-expressed 293 cell line, cotransfected with EIF2S1 Validated Chimera RNAi (Cat # AT1875a)

Please note: All products are 'FOR RESEARCH USE ONLY. NOT FOR USE IN DIAGNOSTIC OR THERAPEUTIC PROCEDURES'.