

EEF1G Antibody (monoclonal) (M01)

Mouse monoclonal antibody raised against a full length recombinant EEF1G.

Catalog # AT1857a

Product Information

Application	WB, IF, E
Primary Accession	P26641
Other Accession	BC015813
Reactivity	Human, Mouse, Rat
Host	mouse
Clonality	monoclonal
Isotype	IgG1 kappa
Clone Names	3F11-1A10
Calculated MW	50119

Additional Information

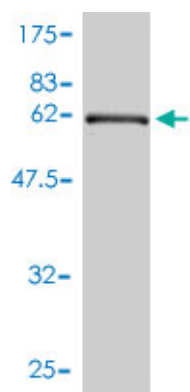
Gene ID	1937
Other Names	Elongation factor 1-gamma, EF-1-gamma, eEF-1B gamma, EEF1G, EF1G
Target/Specificity	EEF1G (AAH15813.1, 1 a.a. ~ 437 a.a) full-length recombinant protein with GST tag. MW of the GST tag alone is 26 KDa.
Dilution	WB~~1:500~1000 IF~~1:50~200 E~~N/A
Format	Clear, colorless solution in phosphate buffered saline, pH 7.2 .
Storage	Store at -20°C or lower. Aliquot to avoid repeated freezing and thawing.
Precautions	EEF1G Antibody (monoclonal) (M01) is for research use only and not for use in diagnostic or therapeutic procedures.

Background

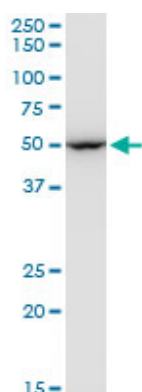
This gene encodes a subunit of the elongation factor-1 complex, which is responsible for the enzymatic delivery of aminoacyl tRNAs to the ribosome. This subunit contains an N-terminal glutathione transferase domain, which may be involved in regulating the assembly of multisubunit complexes containing this elongation factor and aminoacyl-tRNA synthetases.

References

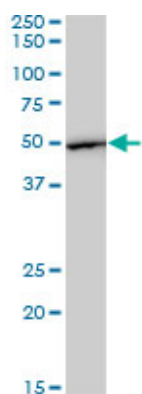
1.The eEF1 gamma Subunit Contacts RNA Polymerase II and Binds Vimentin Promoter Region.Corbi N, Batassa EM, Pisani C, Onori A, Di Certo MG, Strimpakos G, Fanciulli M, Mattei E, Passananti C.PLoS One. 2010 Dec 31;5(12):e14481.



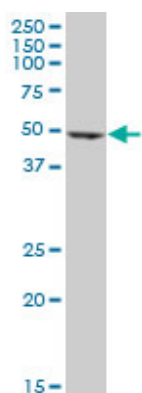
Antibody Reactive Against Recombinant Protein. Western Blot detection against Immunogen (73.59 KDa) .



EEF1G monoclonal antibody (M01), clone 3F11-1A10.
Western Blot analysis of EEF1G expression in PC-12 (Cat # AT1857a)

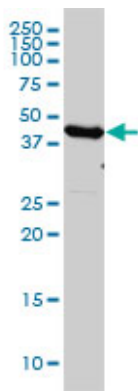


EEF1G monoclonal antibody (M01), clone 3F11-1A10.
Western Blot analysis of EEF1G expression in HepG2 (Cat # AT1857a)

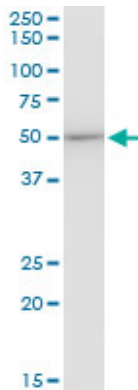


EEF1G monoclonal antibody (M01), clone 3F11-1A10.
Western Blot analysis of EEF1G expression in 293 (Cat # AT1857a)

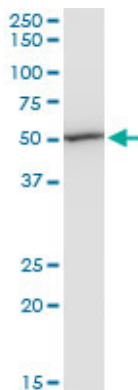
EEF1G monoclonal antibody (M01), clone 3F11-1A10
Western Blot analysis of EEF1G expression in HL-60 (Cat # AT1857a)



EEF1G monoclonal antibody (M01), clone 3F11-1A10.
Western Blot analysis of EEF1G expression in Raw
264.7((Cat # AT1857a)

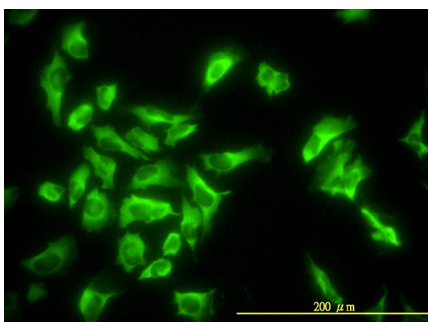
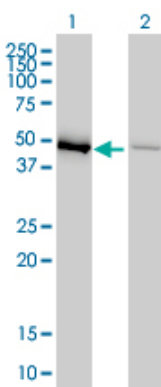


EEF1G monoclonal antibody (M01), clone 3F11-1A10.
Western Blot analysis of EEF1G expression in
NIH/3T3((Cat # AT1857a)

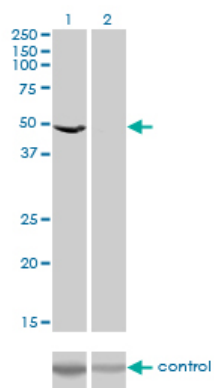


Western Blot analysis of EEF1G expression in transfected
293T cell line by EEF1G monoclonal antibody (M01), clone
3F11-1A10.

Lane 1: EEF1G transfected lysate(50 KDa).
Lane 2: Non-transfected lysate.



Immunofluorescence of monoclonal antibody to EEF1G
on HeLa cell. [antibody concentration 10 ug/ml]



Detection limit for recombinant GST tagged EEF1G is approximately 0.1ng/ml as a capture antibody.

Please note: All products are 'FOR RESEARCH USE ONLY. NOT FOR USE IN DIAGNOSTIC OR THERAPEUTIC PROCEDURES'.