

## EEA1 Antibody (monoclonal) (M03)

Mouse monoclonal antibody raised against a partial recombinant EEA1.

Catalog # AT1854a

### Product Information

---

<b>Application</b>	WB, IF, E
<b>Primary Accession</b>	<a href="#">Q15075</a>
<b>Other Accession</b>	<a href="#">NM_003566</a>
<b>Reactivity</b>	Human
<b>Host</b>	mouse
<b>Clonality</b>	monoclonal
<b>Isotype</b>	IgG1 Kappa
<b>Clone Names</b>	2G2
<b>Calculated MW</b>	162466

### Additional Information

---

<b>Gene ID</b>	8411
<b>Other Names</b>	Early endosome antigen 1, Endosome-associated protein p162, Zinc finger FYVE domain-containing protein 2, EEA1, ZFYVE2
<b>Target/Specificity</b>	EEA1 (NP_003557, 1312 a.a. ~ 1411 a.a) partial recombinant protein with GST tag. MW of the GST tag alone is 26 KDa.
<b>Dilution</b>	WB~~1:500~1000 IF~~1:50~200 E~~N/A
<b>Format</b>	Clear, colorless solution in phosphate buffered saline, pH 7.2 .
<b>Storage</b>	Store at -20°C or lower. Aliquot to avoid repeated freezing and thawing.
<b>Precautions</b>	EEA1 Antibody (monoclonal) (M03) is for research use only and not for use in diagnostic or therapeutic procedures.

### References

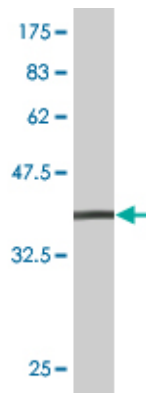
---

1.Flipping the Switch on Clathrin-Mediated Endocytosis using Thermally Responsive Protein Microdomains.Pastuszka MK, Okamoto CT, Hamm-Alvarez SF, Andrew MacKay J.Adv. Funct. Mater.. doi: 10.1002/adfm.201400715

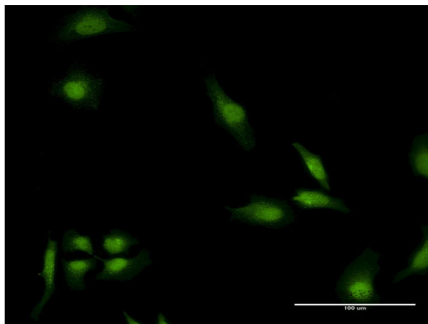
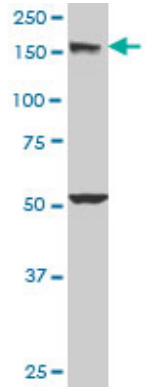
### Images

---

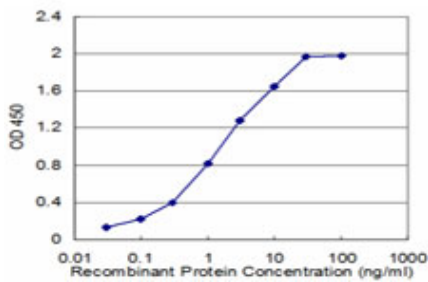
Antibody Reactive Against Recombinant Protein.Western Blot detection against Immunogen (36.74 KDa) .



EEA1 monoclonal antibody (M03), clone 2G2. Western Blot analysis of EEA1 expression in A-431 (Cat # AT1854a)



Immunofluorescence of monoclonal antibody to EEA1 on HeLa cell . [antibody concentration 10 ug/ml]



Detection limit for recombinant GST tagged EEA1 is approximately 0.03ng/ml as a capture antibody.

Please note: All products are 'FOR RESEARCH USE ONLY. NOT FOR USE IN DIAGNOSTIC OR THERAPEUTIC PROCEDURES'.