

## EBI3 Antibody (monoclonal) (M01)

Mouse monoclonal antibody raised against a partial recombinant EBI3. (Please notice that this antibo

Catalog # AT1847a

### Product Information

---

Application	E
Primary Accession	<a href="#">Q14213</a>
Other Accession	<a href="#">NM_005755</a>
Reactivity	Human
Host	mouse
Clonality	monoclonal
Isotype	IgG2a Kappa
Clone Names	1D3
Calculated MW	25396

### Additional Information

---

Gene ID	10148
Other Names	Interleukin-27 subunit beta, IL-27 subunit beta, IL-27B, Epstein-Barr virus-induced gene 3 protein, EBV-induced gene 3 protein, EBI3, IL27B
Target/Specificity	EBI3 (NP_005746, 129 a.a. ~ 229 a.a) partial recombinant protein with GST tag. MW of the GST tag alone is 26 KDa.
Dilution	E~~N/A
Format	Clear, colorless solution in phosphate buffered saline, pH 7.2 .
Storage	Store at -20°C or lower. Aliquot to avoid repeated freezing and thawing.
Precautions	EBI3 Antibody (monoclonal) (M01) is for research use only and not for use in diagnostic or therapeutic procedures.

### Background

---

This gene was identified by its induced expression in B lymphocytes in response Epstein-Barr virus infection. It encodes a secreted glycoprotein belonging to the hematopoietin receptor family, and heterodimerizes with a 28 kDa protein to form interleukin 27 (IL-27). IL-27 regulates T cell and inflammatory responses, in part by activating the Jak/STAT pathway of CD4+ T cells.

### References

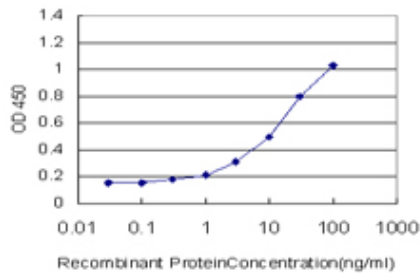
---

Epstein-barr virus-induced gene-3 is expressed in human atheroma plaques. Kempe S, et al. Am J Pathol,

2009 Jul. PMID 19556516. IL27: its roles in the induction and inhibition of inflammation. Carl JW, et al. Int J Clin Exp Pathol, 2008 Jan 1. PMID 18784808. Genome-wide analysis displays marked induction of EBI3/IL-27B in IL-18-activated AML-derived KG1 cells: critical role of two kappaB binding sites in the human EBI3 promoter. Poleganov MA, et al. Mol Immunol, 2008 May. PMID 18336908. Enhanced expression of IL-27 mRNA in human newborns. Krumbiegel D, et al. Pediatr Allergy Immunol, 2008 Sep. PMID 18167155. Towards a proteome-scale map of the human protein-protein interaction network. Rual JF, et al. Nature, 2005 Oct 20. PMID 16189514.

## Images

---



Detection limit for recombinant GST tagged EBI3 is approximately 0.3 ng/ml as a capture antibody.

Please note: All products are 'FOR RESEARCH USE ONLY. NOT FOR USE IN DIAGNOSTIC OR THERAPEUTIC PROCEDURES'.