

DPYSL5 Antibody (monoclonal) (M02)

Mouse monoclonal antibody raised against a partial recombinant DPYSL5.

Catalog # AT1818a

Product Information

Application	WB, E
Primary Accession	Q9BPU6
Other Accession	NM_020134
Reactivity	Human
Host	mouse
Clonality	monoclonal
Isotype	IgG2b Kappa
Clone Names	2G4
Calculated MW	61421

Additional Information

Gene ID	56896
Other Names	Dihydropyrimidinase-related protein 5, DRP-5, CRMP3-associated molecule, CRAM, Collapsin response mediator protein 5, CRMP-5, UNC33-like phosphoprotein 6, ULIP-6, DPYSL5, CRMP5, ULIP6
Target/Specificity	DPYSL5 (NP_064519, 466 a.a. ~ 564 a.a) partial recombinant protein with GST tag. MW of the GST tag alone is 26 KDa.
Dilution	WB~~1:500~1000 E~~N/A
Format	Clear, colorless solution in phosphate buffered saline, pH 7.2 .
Storage	Store at -20°C or lower. Aliquot to avoid repeated freezing and thawing.
Precautions	DPYSL5 Antibody (monoclonal) (M02) is for research use only and not for use in diagnostic or therapeutic procedures.

Background

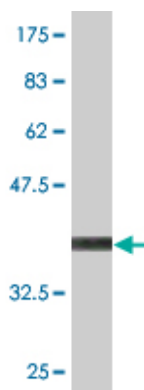
Members of the CRMP family, such as DPYSL5, are believed to play a role in growth cone guidance during neural development.

References

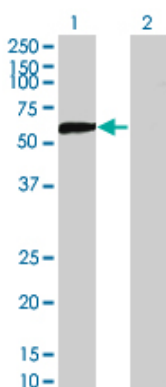
Onco-neural antibodies and tumour type determine survival and neurological symptoms in paraneoplastic neurological syndromes with Hu or CV2/CRMP5 antibodies. Honnorat J, et al. J Neurol Neurosurg Psychiatry, 2009 Apr. PMID 18931014. Extensive expression of collapsin response mediator protein 5 (CRMP5) is a

specific marker of high-grade lung neuroendocrine carcinoma. Meyronet D, et al. Am J Surg Pathol, 2008 Nov. PMID 18769332. High-titer collapsin response-mediating protein-associated (CRMP-5) paraneoplastic optic neuropathy and Vitritis as the only clinical manifestations in a patient with small cell lung carcinoma. Margolin E, et al. J Neuroophthalmol, 2008 Mar. PMID 18347453. Autoimmune myelopathy associated with collapsin response-mediator protein-5 immunoglobulin G. Keegan BM, et al. Ann Neurol, 2008 Apr. PMID 18306241. A human protein-protein interaction network: a resource for annotating the proteome. Stelzl U, et al. Cell, 2005 Sep 23. PMID 16169070.

Images

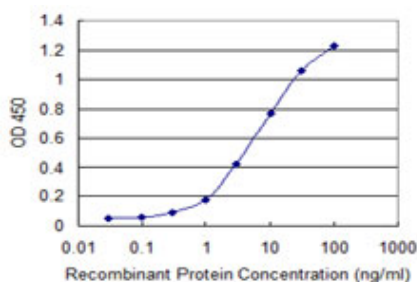


Antibody Reactive Against Recombinant Protein. Western Blot detection against Immunogen (36.63 KDa) .



Western Blot analysis of DPYSL5 expression in transfected 293T cell line by DPYSL5 monoclonal antibody (M02), clone 2G4.

Lane 1: DPYSL5 transfected lysate (61.4 KDa).
Lane 2: Non-transfected lysate.



Detection limit for recombinant GST tagged DPYSL5 is 0.1 ng/ml as a capture antibody.

Please note: All products are 'FOR RESEARCH USE ONLY. NOT FOR USE IN DIAGNOSTIC OR THERAPEUTIC PROCEDURES'.