

DLX3 Antibody (monoclonal) (M01)

Mouse monoclonal antibody raised against a full length recombinant DLX3.

Catalog # AT1778a

Product Information

Application	WB, E
Primary Accession	O60479
Other Accession	BC012361
Reactivity	Human
Host	mouse
Clonality	monoclonal
Isotype	IgG2a Kappa
Clone Names	4F8
Calculated MW	31738

Additional Information

Gene ID	1747
Other Names	Homeobox protein DLX-3, DLX3
Target/Specificity	DLX3 (AAH12361, 1 a.a. ~ 287 a.a) full-length recombinant protein with GST tag. MW of the GST tag alone is 26 KDa.
Dilution	WB~~1:500~1000 E~~N/A
Format	Clear, colorless solution in phosphate buffered saline, pH 7.2 .
Storage	Store at -20°C or lower. Aliquot to avoid repeated freezing and thawing.
Precautions	DLX3 Antibody (monoclonal) (M01) is for research use only and not for use in diagnostic or therapeutic procedures.

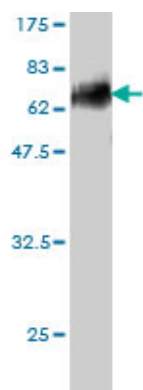
Background

Many vertebrate homeo box-containing genes have been identified on the basis of their sequence similarity with Drosophila developmental genes. Members of the Dlx gene family contain a homeobox that is related to that of Distal-less (Dll), a gene expressed in the head and limbs of the developing fruit fly. The Distal-less (Dlx) family of genes comprises at least 6 different members, DLX1-DLX6. Trichodontoosseous syndrome (TDO), an autosomal dominant condition, has been correlated with DLX3 gene mutation. This gene is located in a tail-to-tail configuration with another member of the gene family on the long arm of chromosome 17. Mutations in this gene have been associated with the autosomal dominant conditions trichodontoosseous syndrome and amelogenesis imperfecta with taurodontism.

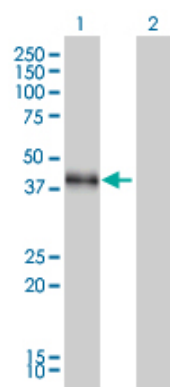
References

Uncombable hair and atopic dermatitis in a case of trichodonto-osseous syndrome. Mayer DE, et al. J Dtsch Dermatol Ges, 2010 Feb. PMID 20151948. Thickness and microhardness of deciduous tooth enamel with known DLX3 mutation. Hyun HK, et al. Arch Oral Biol, 2009 Sep. PMID 19608154. High-density association study of 383 candidate genes for volumetric BMD at the femoral neck and lumbar spine among older men. Yerges LM, et al. J Bone Miner Res, 2009 Dec. PMID 19453261. Homeodomain protein Dlx3 induces phosphorylation-dependent p63 degradation. Di Costanzo A, et al. Cell Cycle, 2009 Apr 15. PMID 19282665. Candidate gene/loci studies in cleft lip/palate and dental anomalies finds novel susceptibility genes for clefts. Vieira AR, et al. Genet Med, 2008 Sep. PMID 18978678.

Images

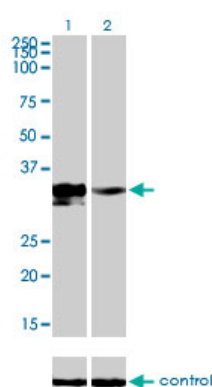


Antibody Reactive Against Recombinant Protein. Western Blot detection against Immunogen (57.31 KDa) .



Western Blot analysis of DLX3 expression in transfected 293T cell line by DLX3 monoclonal antibody (M01), clone 4F8.

Lane 1: DLX3 transfected lysate (32 KDa).
Lane 2: Non-transfected lysate.



Detection limit for recombinant GST tagged DLX3 is approximately 1 ng/ml as a capture antibody.

Please note: All products are 'FOR RESEARCH USE ONLY. NOT FOR USE IN DIAGNOSTIC OR THERAPEUTIC PROCEDURES'.