

DCX Antibody (monoclonal) (M01)

Mouse monoclonal antibody raised against a full length recombinant DCX.

Catalog # AT1727a

Product Information

Application	WB, IF
Primary Accession	O43602
Other Accession	BC027925
Reactivity	Human
Host	mouse
Clonality	monoclonal
Isotype	IgG1 kappa
Clone Names	1G12
Calculated MW	40574

Additional Information

Gene ID	1641
Other Names	Neuronal migration protein doublecortin, Dublin, Lissencephalin-X, Lis-X, DCX, DBCN, LISX
Target/Specificity	DCX (AAH27925, 1 a.a. ~ 360 a.a) full-length recombinant protein with GST tag. MW of the GST tag alone is 26 KDa.
Dilution	WB~~1:500~1000 IF~~1:50~200
Format	Clear, colorless solution in phosphate buffered saline, pH 7.2 .
Storage	Store at -20°C or lower. Aliquot to avoid repeated freezing and thawing.
Precautions	DCX Antibody (monoclonal) (M01) is for research use only and not for use in diagnostic or therapeutic procedures.

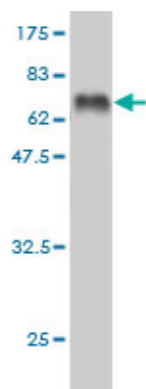
Background

This gene encodes a member of the doublecortin family. The protein encoded by this gene is a cytoplasmic protein and contains two doublecortin domains, which bind microtubules. In the developing cortex, cortical neurons must migrate over long distances to reach the site of their final differentiation. The encoded protein appears to direct neuronal migration by regulating the organization and stability of microtubules. In addition, the encoded protein interacts with LIS1, the regulatory gamma subunit of platelet activating factor acetylhydrolase, and this interaction is important to proper microtubule function in the developing cortex. Mutations in this gene cause abnormal migration of neurons during development and disrupt the layering of the cortex, leading to epilepsy, mental retardation, subcortical band heterotopia (double cortex syndrome) in females and lissencephaly (smooth brain syndrome) in males. Multiple transcript variants encoding different isoforms have been found for this gene.

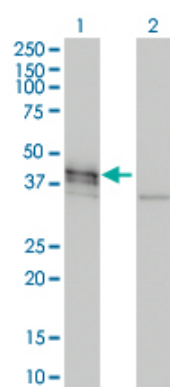
References

1.LC-MS/MS identification of doublecortin as abundant beta cell-selective protein discharged by damaged beta cells in vitro.Jiang L, Brackeva B, Stangel G, Verhaeghen K, Costa O, Couillard-Despres S, Rotheneichner P, Aigner L, Van Schravendijk C, Pipeleers D, Ling Z, Gorus F, Martens GA.J Proteomics. 2013 Jan 19. doi:pii: S1874-3919(13)00022-5. 10.1016/j.jprot.2012.12.031.

Images

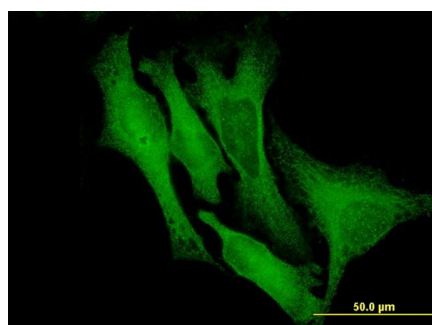


Antibody Reactive Against Recombinant Protein.Western Blot detection against Immunogen (65.34 KDa) .



Western Blot analysis of DCX expression in transfected 293T cell line by DCX monoclonal antibody (M01), clone 1G12.

Lane 1: DCX transfected lysate(41.4 KDa).
Lane 2: Non-transfected lysate.



Immunofluorescence of monoclonal antibody to DCX on HeLa cell . [antibody concentration 10 ug/ml]

Please note: All products are 'FOR RESEARCH USE ONLY. NOT FOR USE IN DIAGNOSTIC OR THERAPEUTIC PROCEDURES'.