

CUTL1 Antibody (monoclonal) (M02)

Mouse monoclonal antibody raised against a partial recombinant CUTL1.

Catalog # AT1685a

Product Information

Application	WB, E
Primary Accession	Q13948
Other Accession	NM_001913
Reactivity	Human
Host	mouse
Clonality	monoclonal
Isotype	IgG1 Kappa
Clone Names	2D10
Calculated MW	77455

Additional Information

Gene ID	1523
Other Names	Protein CASP, CUX1, CUTL1
Target/Specificity	CUTL1 (NP_001904.2, 521 a.a. ~ 620 a.a) partial recombinant protein with GST tag. MW of the GST tag alone is 26 KDa.
Dilution	WB~~1:500~1000 E~~N/A
Format	Clear, colorless solution in phosphate buffered saline, pH 7.2 .
Storage	Store at -20°C or lower. Aliquot to avoid repeated freezing and thawing.
Precautions	CUTL1 Antibody (monoclonal) (M02) is for research use only and not for use in diagnostic or therapeutic procedures.

Background

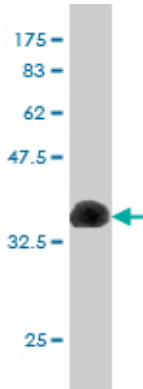
The protein encoded by this gene is a member of the homeodomain family of DNA binding proteins. It may regulate gene expression, morphogenesis, and differentiation and it may also play a role in the cell cycle progression. Several alternatively spliced transcript variants of this gene have been described, but the full-length nature of some of these variants has not been determined.

References

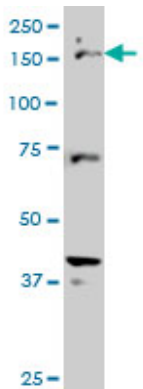
Personalized smoking cessation: interactions between nicotine dose, dependence and quit-success genotype score. Rose JE, et al. Mol Med, 2010 Jul-Aug. PMID 20379614. New genetic associations detected in a host response study to hepatitis B vaccine. Davila S, et al. Genes Immun, 2010 Apr. PMID 20237496. CDP/cut is an

osteoblastic coactivator of the vitamin D receptor (VDR). Ochiai E, et al. J Bone Miner Res, 2010 May. PMID 19888899.p110 CUX1 homeodomain protein stimulates cell migration and invasion in part through a regulatory cascade culminating in the repression of E-cadherin and occludin. Keding V, et al. J Biol Chem, 2009 Oct 2. PMID 19635798.FGFR2 is associated with hair thickness in Asian populations. Fujimoto A, et al. J Hum Genet, 2009 Aug. PMID 19590514.

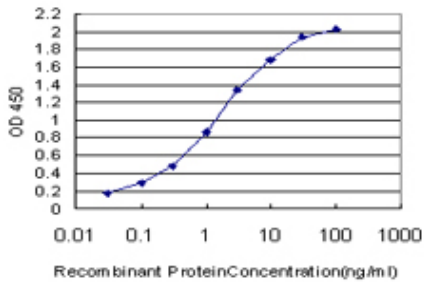
Images



Antibody Reactive Against Recombinant Protein.Western Blot detection against Immunogen (36.63 KDa) .



CUTL1 monoclonal antibody (M02), clone 2D10 Western Blot analysis of CUTL1 expression in HeLa S3 NE (Cat # AT1685a)



Detection limit for recombinant GST tagged CUTL1 is approximately 0.03ng/ml as a capture antibody.

Please note: All products are 'FOR RESEARCH USE ONLY. NOT FOR USE IN DIAGNOSTIC OR THERAPEUTIC PROCEDURES'.