

CSDA Antibody (monoclonal) (M02)

Mouse monoclonal antibody raised against a partial recombinant CSDA.
Catalog # AT1648a

Product Information

Application	WB, IHC, E
Primary Accession	P16989
Other Accession	NM_003651
Reactivity	Human
Host	mouse
Clonality	monoclonal
Isotype	IgG2b Kappa
Clone Names	4D9

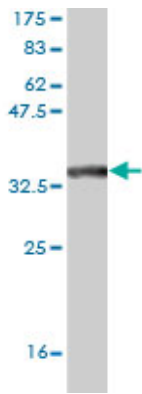
Additional Information

Other Names	Y-box-binding protein 3, Cold shock domain-containing protein A, DNA-binding protein A, Single-strand DNA-binding protein NF-GMB, YBX3, CSDA, DBPA
Target/Specificity	CSDA (NP_003642, 241 a.a. ~ 330 a.a) partial recombinant protein with GST tag. MW of the GST tag alone is 26 KDa.
Dilution	WB~~1:500~1000 IHC~~1:100~500 E~~N/A
Format	Clear, colorless solution in phosphate buffered saline, pH 7.2 .
Storage	Store at -20°C or lower. Aliquot to avoid repeated freezing and thawing.
Precautions	CSDA Antibody (monoclonal) (M02) is for research use only and not for use in diagnostic or therapeutic procedures.

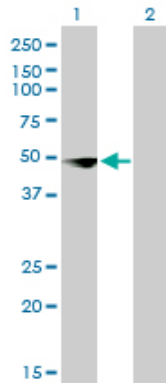
References

ZONAB promotes proliferation and represses differentiation of proximal tubule epithelial cells. Lima WR, et al. J Am Soc Nephrol, 2010 Mar. PMID 20133480. Upregulation of human DNA binding protein A (dbpA) in gastric cancer cells. Wang GR, et al. Acta Pharmacol Sin, 2009 Oct. PMID 19749785. A dominant negative mutant of the E. coli RNA helicase DbpA blocks assembly of the 50S ribosomal subunit. Sharpe Elles LM, et al. Nucleic Acids Res, 2009 Oct. PMID 19734347. The metastasis efficiency modifier ribosomal RNA processing 1 homolog B (RRP1B) is a chromatin-associated factor. Crawford NP, et al. J Biol Chem, 2009 Oct 16. PMID 19710015. The symplekin/ZONAB complex inhibits intestinal cell differentiation by the repression of AML1/Runx1. Buchert M, et al. Gastroenterology, 2009 Jul. PMID 19328795.

Images

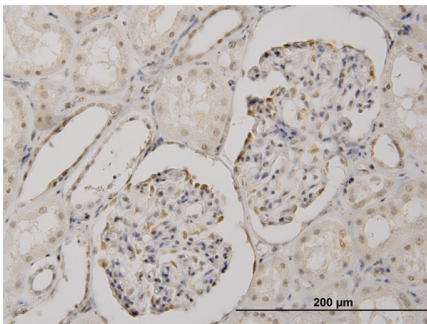


Antibody Reactive Against Recombinant Protein. Western Blot detection against Immunogen (35.64 KDa) .

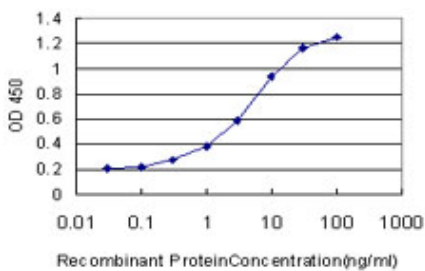


Western Blot analysis of CSDA expression in transfected 293T cell line by CSDA monoclonal antibody (M02), clone 4D9.

Lane 1: CSDA transfected lysate(40.1 KDa).
Lane 2: Non-transfected lysate.



Immunoperoxidase of monoclonal antibody to CSDA on formalin-fixed paraffin-embedded human kidney. [antibody concentration 3 ug/ml]



Detection limit for recombinant GST tagged CSDA is approximately 0.3ng/ml as a capture antibody.

Please note: All products are 'FOR RESEARCH USE ONLY. NOT FOR USE IN DIAGNOSTIC OR THERAPEUTIC PROCEDURES'.