

CRYM Antibody (monoclonal) (M03)

Mouse monoclonal antibody raised against a partial recombinant CRYM.

Catalog # AT1645a

Product Information

Application	WB, IHC, IP, E
Primary Accession	Q14894
Other Accession	NM_001888
Reactivity	Human
Host	mouse
Clonality	monoclonal
Isotype	IgG1 Kappa
Clone Names	6B3
Calculated MW	33776

Additional Information

Gene ID	1428
Other Names	Ketimine reductase mu-crystallin, NADP-regulated thyroid-hormone-binding protein, CRYM, THBP
Target/Specificity	CRYM (NP_001879, 215 a.a. ~ 314 a.a) partial recombinant protein with GST tag. MW of the GST tag alone is 26 KDa.
Dilution	WB~~1:500~1000 IHC~~1:100~500 IP~~N/A E~~N/A
Format	Clear, colorless solution in phosphate buffered saline, pH 7.2 .
Storage	Store at -20°C or lower. Aliquot to avoid repeated freezing and thawing.
Precautions	CRYM Antibody (monoclonal) (M03) is for research use only and not for use in diagnostic or therapeutic procedures.

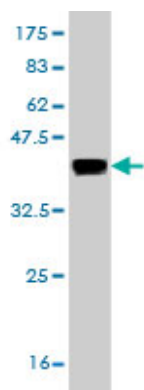
Background

Crystallins are separated into two classes: taxon-specific and ubiquitous. The former class is also called phylogenetically-restricted crystallins. The latter class constitutes the major proteins of vertebrate eye lens and maintains the transparency and refractive index of the lens. This gene encodes a taxon-specific crystallin protein that binds NADPH and has sequence similarity to bacterial ornithine cyclodeaminases. The encoded protein does not perform a structural role in lens tissue, and instead it binds thyroid hormone for possible regulatory or developmental roles. Mutations in this gene have been associated with autosomal dominant non-syndromic deafness. Multiple alternatively spliced transcript variants have been found for this gene.

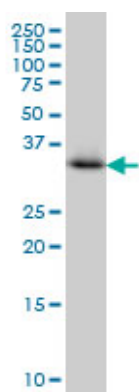
References

1.The FSHD Atrophic Myotube Phenotype Is Caused by DUX4 Expression.Vanderplanck C, Anseau E, Charron S, Stricwant N, Tassin A, Laoudj-Chenivesse D, Wilton SD, Coppee F, Belayew A.PLoS One. 2011;6(10):e26820. Epub 2011 Oct 28.2.Proteomic Analysis Illuminates a Novel Structural Definition of the Clastrum and Insula.Mathur BN, Caprioli RM, Deutch AY.Cereb Cortex. 2009 Oct;19(10):2372-9. Epub 2009 Jan 23.3.Abnormal expression of mu-crystallin in facioscapulohumeral muscular dystrophy.Reed PW, Corse AM, Porter NC, Flanigan KM, Bloch RJ.Exp Neurol. 2007 Jun;205(2):583-6. Epub 2007 Mar 21.

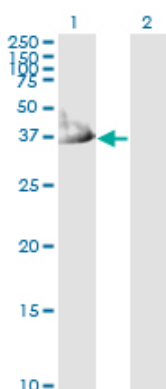
Images



Antibody Reactive Against Recombinant Protein.Western Blot detection against Immunogen (36.74 kDa) .



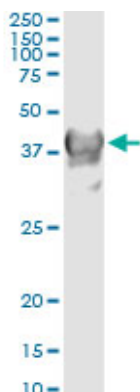
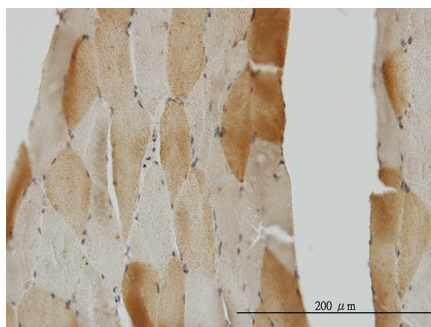
CRYM monoclonal antibody (M03), clone 6B3 Western Blot analysis of CRYM expression in Jurkat ((Cat # AT1645a)



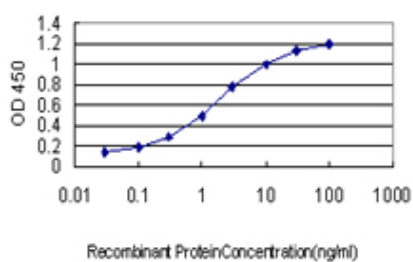
Western Blot analysis of CRYM expression in transfected 293T cell line by CRYM monoclonal antibody (M03), clone 6B3.

Lane 1: CRYM transfected lysate(33.8 kDa).
Lane 2: Non-transfected lysate.

Immunoperoxidase of monoclonal antibody to CRYM on formalin-fixed paraffin-embedded human skeletal muscle. [antibody concentration 3 ug/ml]



Immunoprecipitation of CRYM transfected lysate using anti-CRYM monoclonal antibody and Protein A Magnetic Bead ([U0007](#)), and immunoblotted with CRYM MaxPab rabbit polyclonal antibody.



Detection limit for recombinant GST tagged CRYM is approximately 0.03ng/ml as a capture antibody.

Please note: All products are 'FOR RESEARCH USE ONLY. NOT FOR USE IN DIAGNOSTIC OR THERAPEUTIC PROCEDURES'.