

CRSP6 Antibody (monoclonal) (M01)

Mouse monoclonal antibody raised against a partial recombinant CRSP6.

Catalog # AT1631a

Product Information

Application	WB, IHC, IF, E
Primary Accession	Q9NVC6
Other Accession	BC021101
Reactivity	Human
Host	mouse
Clonality	monoclonal
Isotype	IgG1 Kappa
Clone Names	4D4
Calculated MW	72890

Additional Information

Gene ID	9440
Other Names	Mediator of RNA polymerase II transcription subunit 17, Activator-recruited cofactor 77 kDa component, ARC77, Cofactor required for Sp1 transcriptional activation subunit 6, CRSP complex subunit 6, Mediator complex subunit 17, Thyroid hormone receptor-associated protein complex 80 kDa component, Trap80, Transcriptional coactivator CRSP77, Vitamin D3 receptor-interacting protein complex 80 kDa component, DRIP80, MED17, ARC77, CRSP6, DRIP77, DRIP80, TRAP80
Target/Specificity	CRSP6 (AAH21101, 551 a.a. ~ 651 a.a) partial recombinant protein with GST tag. MW of the GST tag alone is 26 kDa.
Dilution	WB~~1:500~1000 IHC~~1:100~500 IF~~1:50~200 E~~N/A
Format	Clear, colorless solution in phosphate buffered saline, pH 7.2 .
Storage	Store at -20°C or lower. Aliquot to avoid repeated freezing and thawing.
Precautions	CRSP6 Antibody (monoclonal) (M01) is for research use only and not for use in diagnostic or therapeutic procedures.

Background

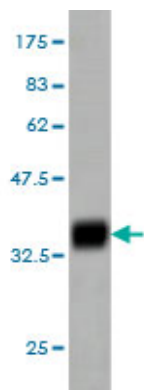
The activation of gene transcription is a multistep process that is triggered by factors that recognize transcriptional enhancer sites in DNA. These factors work with co-activators to direct transcriptional initiation by the RNA polymerase II apparatus. The protein encoded by this gene is a subunit of the CRSP (cofactor required for SP1 activation) complex, which, along with TFIID, is required for efficient activation by SP1. This protein is also a component of other multisubunit complexes e.g. thyroid hormone receptor-(TR-)

associated proteins which interact with TR and facilitate TR function on DNA templates in conjunction with initiation factors and cofactors.

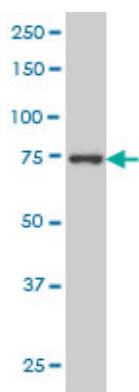
References

1. Identification of target genes for the CDK subunits of the Mediator complex. Tsutsui T, Fukasawa R, Tanaka A, Hirose Y, Ohkuma Y. *Genes Cells*. 2011 Nov 27. doi: 10.1111/j.1365-2443.2011.01565.x.

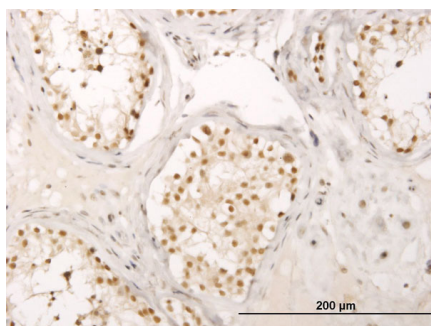
Images



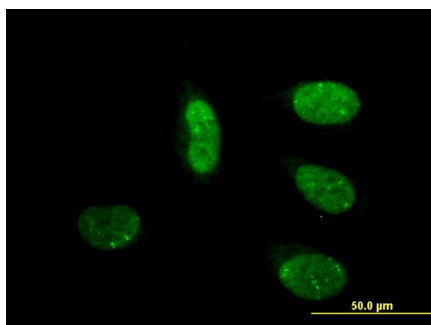
Antibody Reactive Against Recombinant Protein. Western Blot detection against Immunogen (36.85 KDa) .



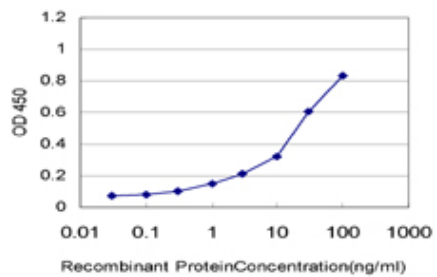
CRSP6 monoclonal antibody (M01), clone 4D4 Western Blot analysis of CRSP6 expression in HeLa S3 NE (Cat # AT1631a)



Immunoperoxidase of monoclonal antibody to CRSP6 on formalin-fixed paraffin-embedded human testis. [antibody concentration 1.2 ug/ml]



Immunofluorescence of monoclonal antibody to CRSP6 on HeLa cell. [antibody concentration 10 ug/ml]



Detection limit for recombinant GST tagged CRSP6 is approximately 0.3ng/ml as a capture antibody.

Please note: All products are 'FOR RESEARCH USE ONLY. NOT FOR USE IN DIAGNOSTIC OR THERAPEUTIC PROCEDURES'.