

CREB3L4 Antibody (monoclonal) (M01)

Mouse monoclonal antibody raised against a partial recombinant CREB3L4.

Catalog # AT1618a

Product Information

Application	WB, IF, E
Primary Accession	Q8TEY5
Other Accession	NM_130898
Reactivity	Human
Host	mouse
Clonality	monoclonal
Isotype	IgG2a Kappa
Clone Names	3E4
Calculated MW	43432

Additional Information

Gene ID	148327
Other Names	Cyclic AMP-responsive element-binding protein 3-like protein 4, cAMP-responsive element-binding protein 3-like protein 4, Androgen-induced basic leucine zipper protein, AIBZIP, Attaching to CRE-like 1, ATCE1, Cyclic AMP-responsive element-binding protein 4, CREB-4, cAMP-responsive element-binding protein 4, Transcript induced in spermiogenesis protein 40, Tisp40, hJAL, Processed cyclic AMP-responsive element-binding protein 3-like protein 4, CREB3L4, AIBZIP, CREB4, JAL
Target/Specificity	CREB3L4 (NP_570968, 1 a.a. ~ 110 a.a) partial recombinant protein with GST tag. MW of the GST tag alone is 26 kDa.
Dilution	WB~~1:500~1000 IF~~1:50~200 E~~N/A
Format	Clear, colorless solution in phosphate buffered saline, pH 7.2 .
Storage	Store at -20°C or lower. Aliquot to avoid repeated freezing and thawing.
Precautions	CREB3L4 Antibody (monoclonal) (M01) is for research use only and not for use in diagnostic or therapeutic procedures.

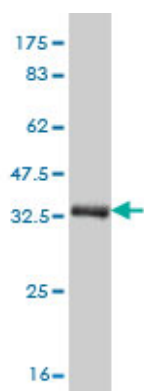
Background

cAMP response element-binding (CREB) proteins are a family of mammalian transcription activators. For further background information on CREB proteins, see CREB1 (MIM 123810).

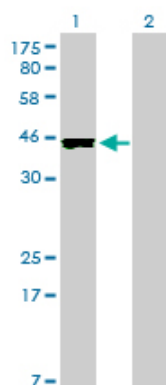
References

Transcriptional profiling of genes that are regulated by the endoplasmic reticulum-bound transcription factor AIBZIP/CREB3L4 in prostate cells. Ben Aicha S, et al. *Physiol Genomics*, 2007 Oct 22. PMID 17712038. CREB4, a transmembrane bZip transcription factor and potential new substrate for regulation and cleavage by S1P. Stirling J, et al. *Mol Biol Cell*, 2006 Jan. PMID 16236796. Generation and initial analysis of more than 15,000 full-length human and mouse cDNA sequences. Strausberg RL, et al. *Proc Natl Acad Sci U S A*, 2002 Dec 24. PMID 12477932. Molecular cloning and characterization of a novel human cAMP response element-binding (CREB) gene (CREB4). Cao G, et al. *J Hum Genet*, 2002. PMID 12111373. Atce1: a novel mouse cyclic adenosine 3',5'-monophosphate-responsive element-binding protein-like gene exclusively expressed in postmeiotic spermatids. Stelzer G, et al. *Endocrinology*, 2002 May. PMID 11956138.

Images

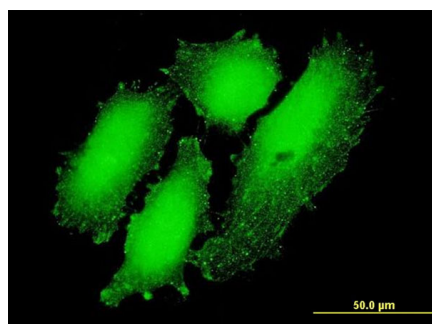


Antibody Reactive Against Recombinant Protein. Western Blot detection against Immunogen (37.84 KDa) .



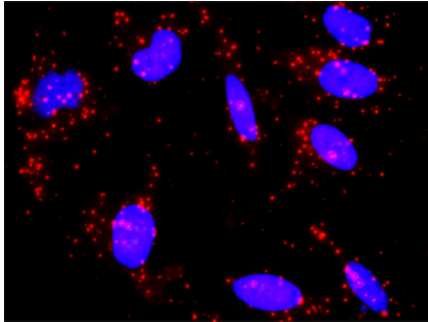
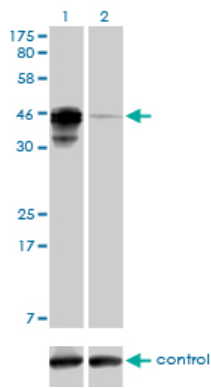
Western Blot analysis of CREB3L4 expression in transfected 293T cell line by CREB3L4 monoclonal antibody (M01), clone 3E3.

Lane 1: CREB3L4 transfected lysate (43.4 KDa).
Lane 2: Non-transfected lysate.



Immunofluorescence of monoclonal antibody to CREB3L4 on HeLa cell . [antibody concentration 10 ug/ml]

Detection limit for recombinant GST tagged CREB3L4 is approximately 10ng/ml as a capture antibody.



Western blot analysis of CREB3L4 over-expressed 293 cell line, cotransfected with CREB3L4 Validated Chimera RNAi (Cat # AT1618a)

Citations

- [The role of CREB3L4 in the proliferation of prostate cancer cells.](#)

Please note: All products are 'FOR RESEARCH USE ONLY. NOT FOR USE IN DIAGNOSTIC OR THERAPEUTIC PROCEDURES'.