

CPNE6 Antibody (monoclonal) (M01)

Mouse monoclonal antibody raised against a full length recombinant CPNE6.

Catalog # AT1607a

Product Information

Application	WB, E
Primary Accession	O95741
Other Accession	BC018046
Reactivity	Human
Host	mouse
Clonality	monoclonal
Isotype	IgG3 Kappa
Clone Names	6D11
Calculated MW	61991

Additional Information

Gene ID	9362
Other Names	Copine-6, Copine VI, Neuronal-copine, N-copine, CPNE6
Target/Specificity	CPNE6 (AAH18046, 1 a.a. ~ 557 a.a) full-length recombinant protein with GST tag. MW of the GST tag alone is 26 KDa.
Dilution	WB~~1:500~1000 E~~N/A
Format	Clear, colorless solution in phosphate buffered saline, pH 7.2 .
Storage	Store at -20°C or lower. Aliquot to avoid repeated freezing and thawing.
Precautions	CPNE6 Antibody (monoclonal) (M01) is for research use only and not for use in diagnostic or therapeutic procedures.

Background

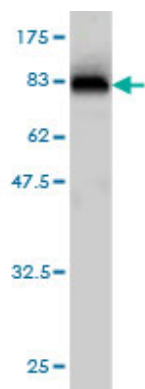
This gene encodes a brain-specific member of the copine family, which is composed of calcium-dependent membrane-binding proteins. The gene product contains two N-terminal C2 domains, and one von Willebrand factor A domain. It may have a role in synaptic plasticity.

References

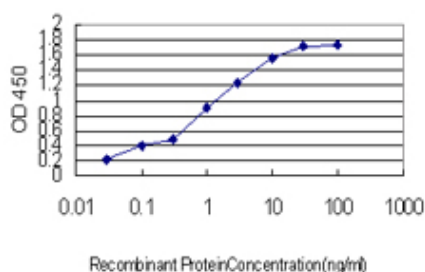
A human protein-protein interaction network: a resource for annotating the proteome. Stelzl U, et al. Cell, 2005 Sep 23. PMID 16169070. The status, quality, and expansion of the NIH full-length cDNA project: the Mammalian Gene Collection (MGC). Gerhard DS, et al. Genome Res, 2004 Oct. PMID 15489334. Complete sequencing and characterization of 21,243 full-length human cDNAs. Ota T, et al. Nat Genet, 2004 Jan. PMID

14702039.Generation and initial analysis of more than 15,000 full-length human and mouse cDNA sequences. Strausberg RL, et al. Proc Natl Acad Sci U S A, 2002 Dec 24. PMID 12477932.Characterization of human copine III as a phosphoprotein with associated kinase activity. Caudell EG, et al. Biochemistry, 2000 Oct 24. PMID 11041869.

Images



Antibody Reactive Against Recombinant Protein.Western Blot detection against Immunogen (87.01 KDa) .



Detection limit for recombinant GST tagged CPNE6 is approximately 0.03ng/ml as a capture antibody.

Please note: All products are 'FOR RESEARCH USE ONLY. NOT FOR USE IN DIAGNOSTIC OR THERAPEUTIC PROCEDURES'.